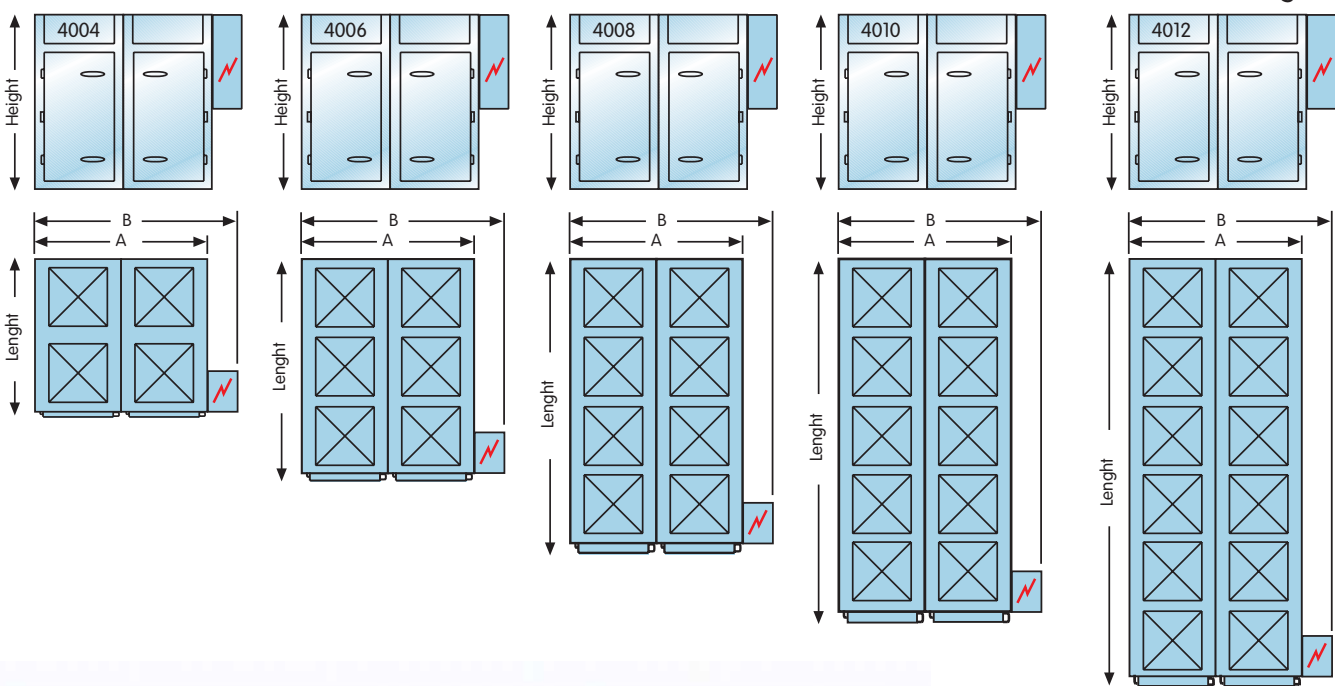


Our Ellermatic 4000 Series models in overview

Defination /model		4004	4006	4008	4010	4012
Capacity	ca. kg	440÷1600	660÷2400	880÷3200	1100÷4000	1220÷4800
Number of trolleys		4	6	8	10	12
Dimensions of trolleys	ca. m	1x1x2	1x1x2	1x1x2	1x1x2	1x1x2
Width A	ca. cm	320	320	320	320	320
Width incl. switch box B	ca. cm	390	390	390	390	390
Length	ca. cm	235	340	445	550	655
Total height	ca. cm	330	330	350	350	350
Plants with electrical heating up to 120°C						
Electrical supply 400V/50Hz*	ca. kW	116	174	232	290	348
Plants with electrical heating up to 160°C						
Electrical supply 400V/50Hz*	ca. kW	140	210	280	350	420
Plants with gas or diatermic oil heating up to 120 or 160°C						
Electrical supply 400V/50Hz*	ca. kW	20	30	40	50	60
Gas connection	inch	3/4	3/4	1	1	1"1/2
Diatermic oil connection	DN	32	50	65	80	100
Plants with steam heating up to 100°C						
Electrical supply 400V/50Hz*	ca. kW	20	30	40	50	60
Consum low pressure steam	ca. kg/h	240	360	480	600	720
Consum height pressure steam	ca. kg/h	240	360	480	600	720

*with friction smoke generator +7,5 kW



changes reserved

Top quality through high tech



Universal plants

ELLERMATIC



I- 39022 Lagundo-Merano, Via Weingartner 11, Southtyrol
 +39-0473-497700 +39 0473 497701
 www.eller.biz info@eller.biz

Economically with top performance confirmed through multiplied employments.....

That's the presentation of our universal machines Ellermatic.

This machines serves to work with different quality-products like sausage, meat, poultry, fish, cheese, vegetables ect.

Your advance decide: different machine versions fulfill the individual product- and clients wishes.

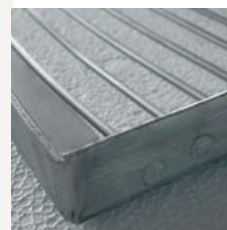
- Versatility will be shown in the different work possibilities like reddening, maturing, roasting, baking, scalding, drying, cooking, cold smoking, warm smoking, hot smoking ect.
- More productivity against the conventional plants through higher loading capacity of the loading trollies.
- Reduced working times through increased air-ventilation .
- Decreased drying times through special exhaust fan with constant, extremely high air flow through.
- Enormous work facilitation through different advanced microprocessor controls what makes possible for example night- or holiday work , as well as fully automatic work flows.
- Perfectly uniformity of the product because of each one air fan per trolley.
- Any extension of product range possible through the use of additional equipment like shower, cooling, diff. smoke generators ect.
- Minimum of energy expense because of special isolation .
- Avoid of to high weight loss through DELTA – function
- Easy drive in of the loading trollies through niveau leveled, fixed ramps.
- Minimum loudness through big air fans with low rotation speeds.
- Uniform smoke distribution because of each one entry and one exit of air flow per loading trolley.



Loading trollies complete out of stainless steel to load of different products with optimum space using



Smoke stick star-formed for sausage supply



Tray with round bars



Tray with holes



Fish hook



Ham forms



Loading trolley for ham forms

Our Ellermatic 3000 Series models in overview

Definition /model		3000	3002	3003	3004	3005	3006
Capacity	ca. kg	110+400	220+800	330+1200	440+1600	550+2000	660+2400
Number of trollies		1	2	3	4	5	6
Dimension of trollies	ca. m	1x1x2	1x1x2	1x1x2	1x1x2	1x1x2	1x1x2
Width A	ca. cm	160	160	160	160	160	160
Width incl. switsch box B	ca. cm	205	205	205	230	230	230
Lenght	ca. cm	130	235	340	445	550	655
Total height	ca. cm	320	320	330	330	350	350

Ellermatic/G plants with overhead conveyor system

Total height	ca. cm	--	370	380	380	400	400
Height overhead conveyor	ca. cm	--	245	245	245	245	245

Plants with electrical heating up to 120°C

Electrical supply 400V/50Hz*	ca. kW	29	58	87	116	145	174
------------------------------	--------	----	----	----	-----	-----	-----

Plants with electrical heating up to 160°C

Electrical supply 400V/50Hz*	ca. kW	35	70	105	140	175	210
------------------------------	--------	----	----	-----	-----	-----	-----

Plants with gas or diatermic oil heating up to 120 or 250°C

Electrical supply 400V/50Hz*	ca. kW	6	10	15	20	25	30
------------------------------	--------	---	----	----	----	----	----

Gas connection	inch	1/2	1/2	3/4	3/4	3/4	3/4
----------------	------	-----	-----	-----	-----	-----	-----

Diatermic oil connection	DN	25	25	32	32	50	50
--------------------------	----	----	----	----	----	----	----

Plants with steam heating up to 100°C

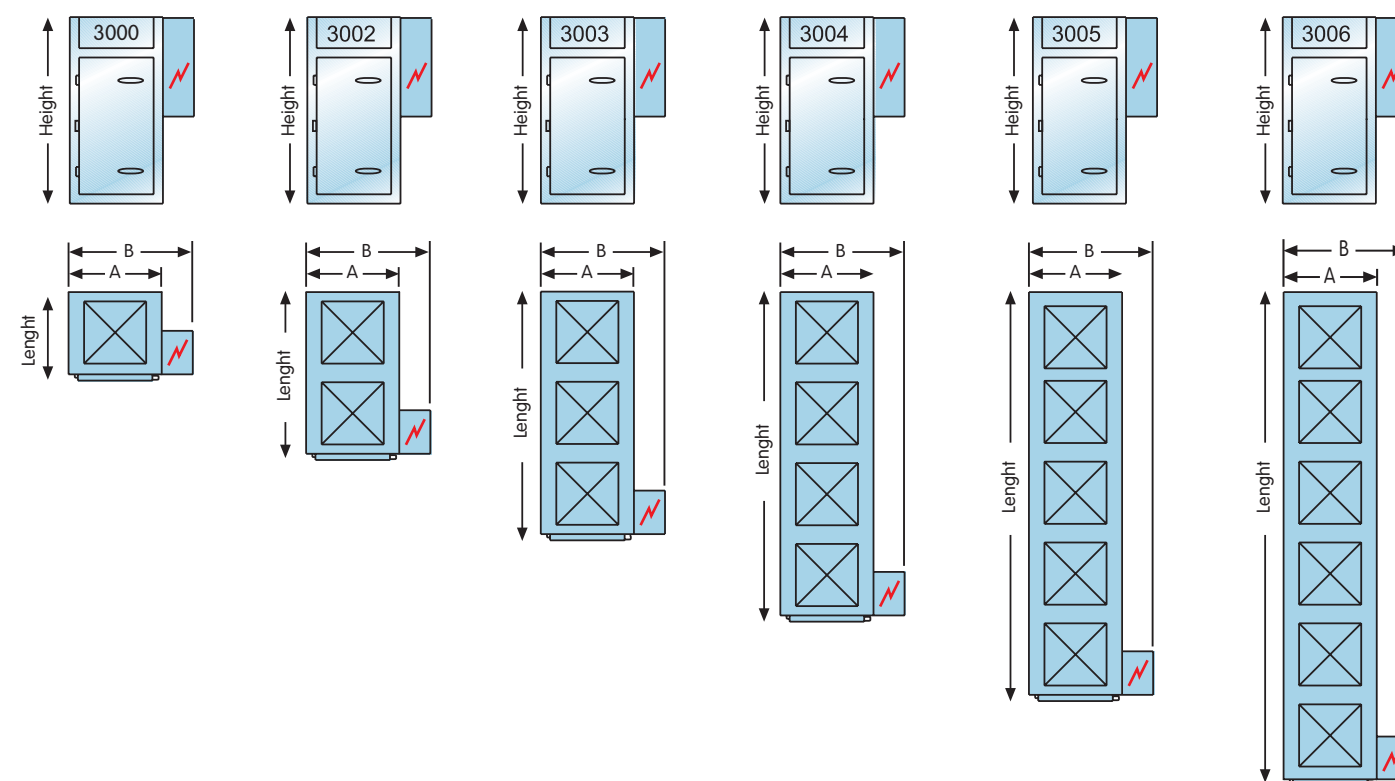
Electrical supply 400V/50Hz*	ca. kW	6	10	15	20	25	30
------------------------------	--------	---	----	----	----	----	----

Consum low pressure steam	ca. kg/h	60	120	180	240	300	360
---------------------------	----------	----	-----	-----	-----	-----	-----

Consum high pressure steam	ca. kg/h	60	120	180	240	300	360
----------------------------	----------	----	-----	-----	-----	-----	-----

*With friction smoke generator +5,5 kW - E.3004, E.3005, E.3006 +7,5 kW

Changes reserved





Ellermatic G
Characteristics like Ellermatic but with overhead conveyor system.



Ellermatic Serie 4000
Machine with double lined – parallel row.



Pipe connections out of stainless steel



Robust stainless steel lock system. Easy to open and close also from inside



Flexible cleaning container



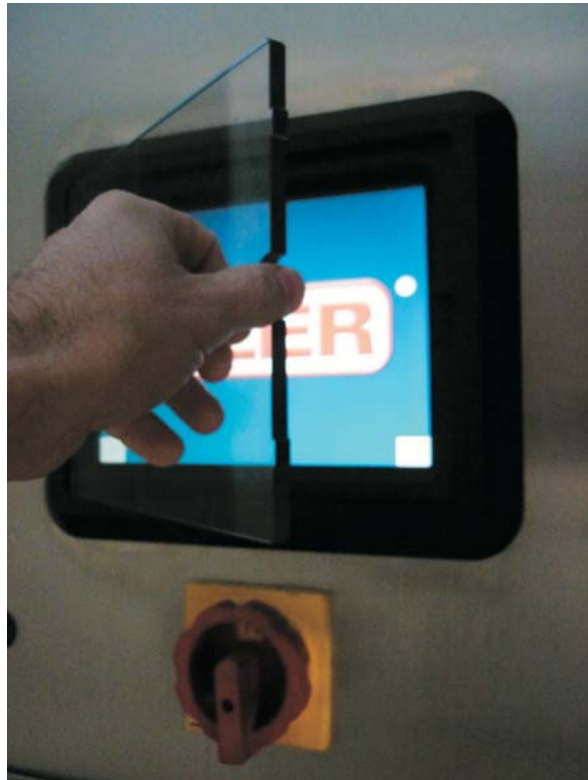
Psychrometric humidity control.



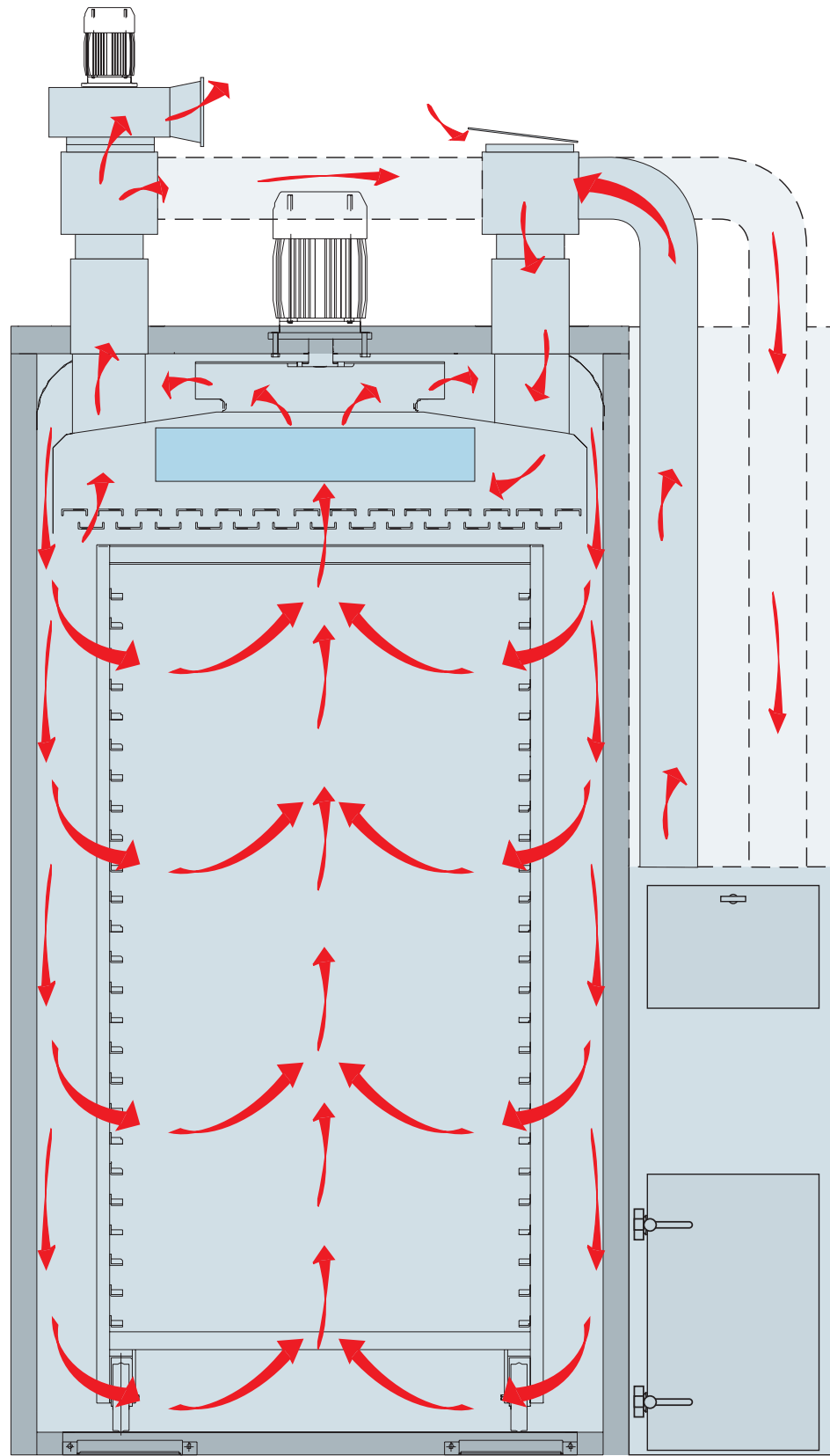
Friction smoke generator integrate in door.



Machine inside also for forklift drive-in possible.



MICRO Touch with up to 99 storable programs with 20 work steps each and touch-screen. An easy touch on the display of the screen and your orders will be done immediately and exact.



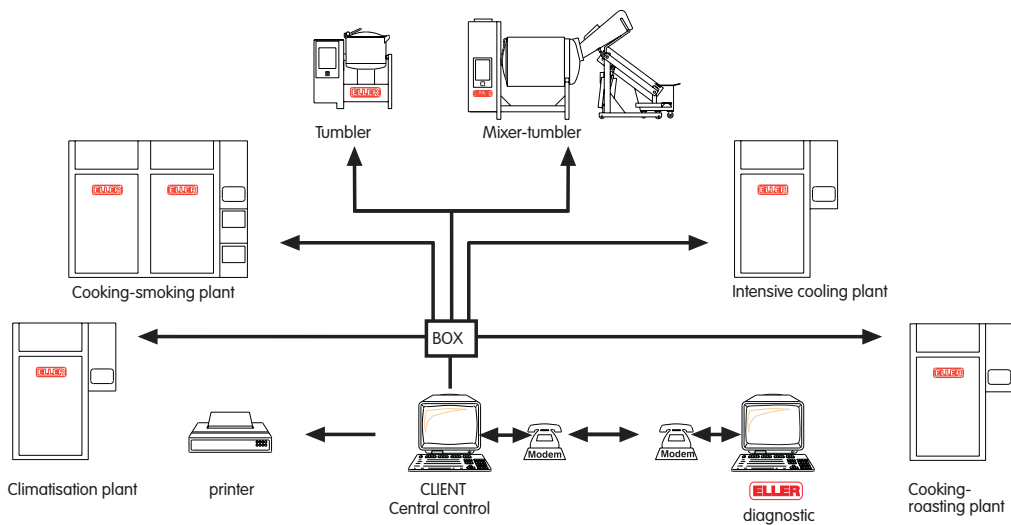
Friction smoke generator
Smoke generator integrate in door or as external, side positioned version. As smoke material will be used square-timbers (wood) and each of wood type there will be a different smoke flavor. The smoke will be generated with very low temperatures, therefore it is without or with very less pollutant and very low number of tar. With smoke-recovery system no smoke exit. Will reach also without waste air cleaner (catalyst) the necessary limits.



Saw dust and wood chips smoke generator
Your choose between saw dust or wood chips smoke generating depending of the adjusting of the generator. As unit-construction installed (with up to 24-48 h smoking time), out of stainless steel with big stock container. Saw dust will be transported automatically into the burning chamber, automatical burning and after smould down through air supply.



Liquid smoke generator
Smoke generator for injection of liquid smoke, with fully using of the smoke flavours without tar. Spraying nozzles will be used to mix smoke and air. A very fine fog will be produced in side the chamber. No waste air cleaning necessary to keep the limit values.



Process control and documentation
Software VN2 to process controlling and supervising by ISO 9000 respectively HACCP.

VN2 offers the possibility for a central supervising and controlling of several ELLER machines about distance diagrams via modem through our technicians in the factory. VN2 records program data and work processes and offer the possibility to visualize written or graphic the processes and to print it. That's the way you study your production working and to improve your production.

