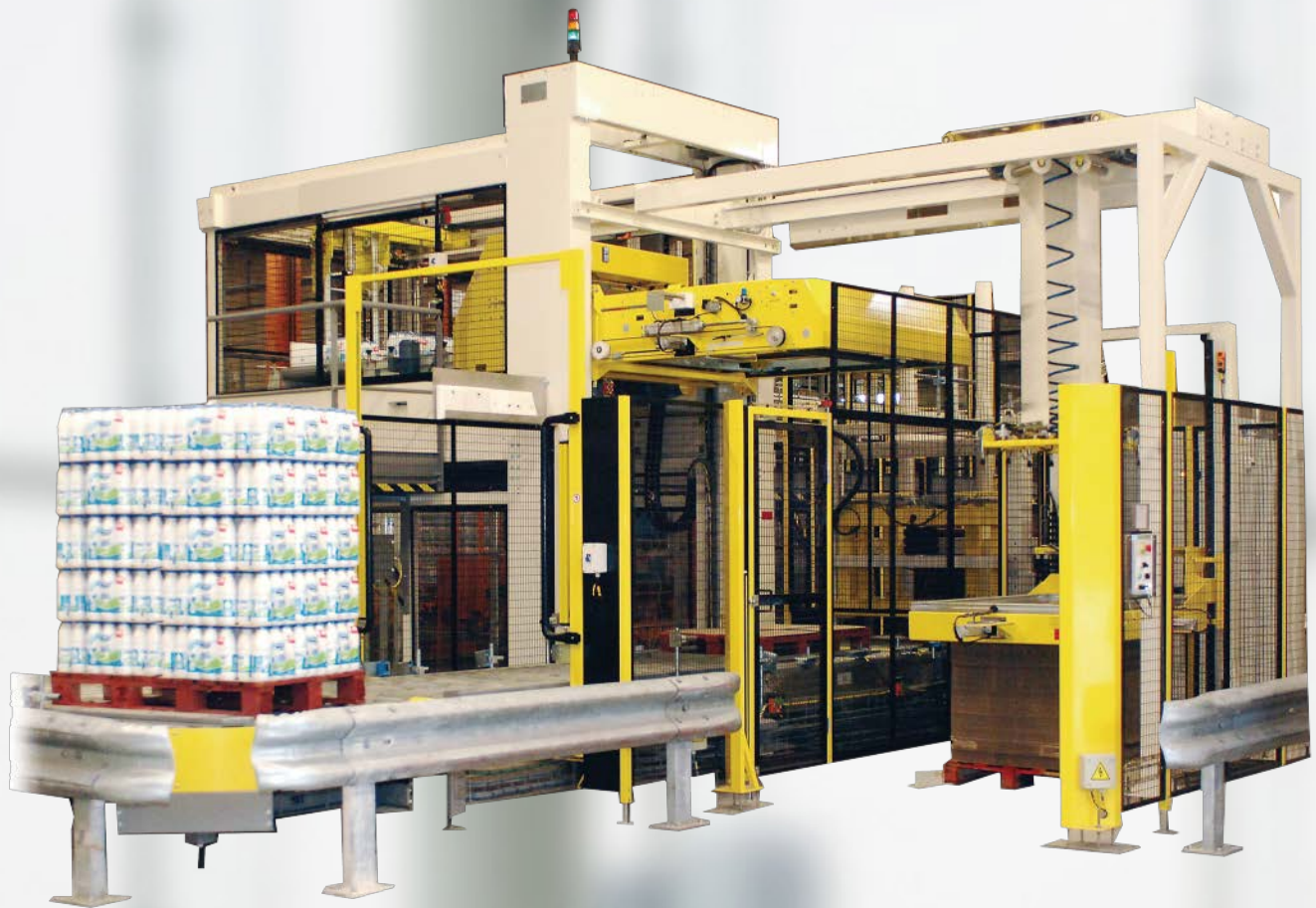


# Pal-Pack 4000



Automatic Layer by Layer Palletizer

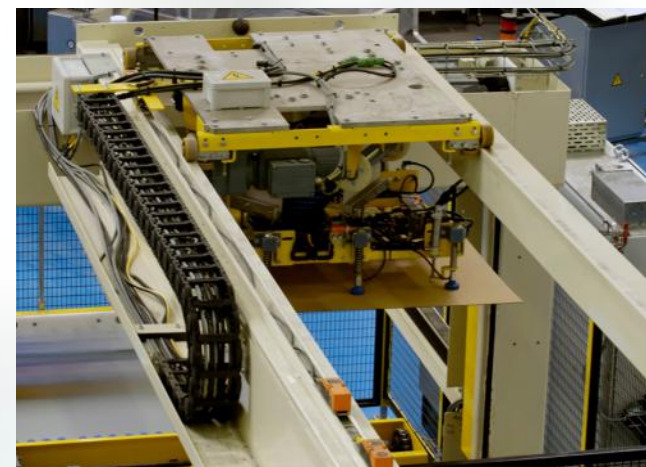
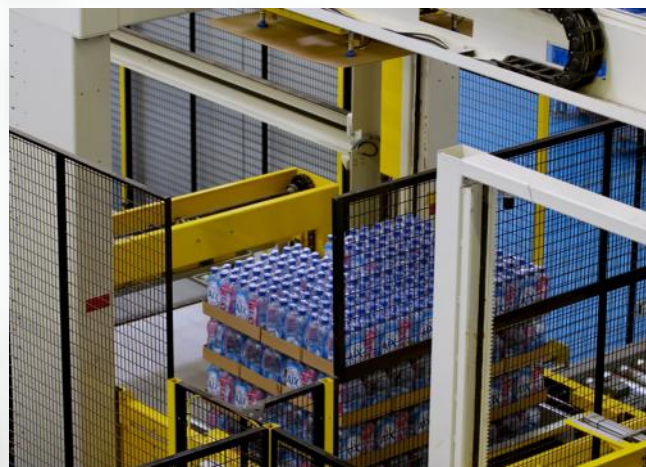
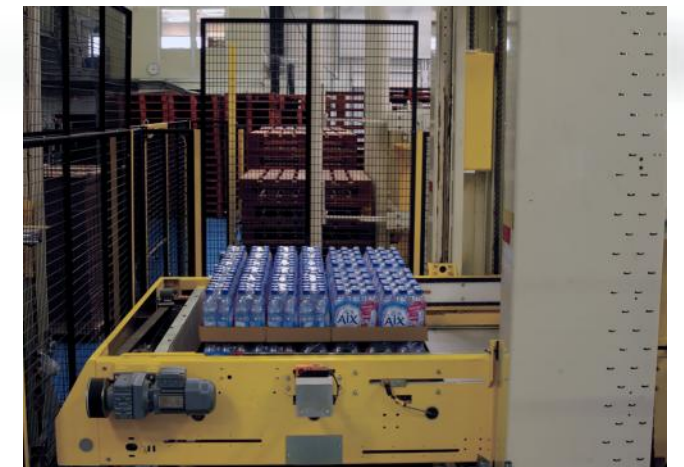
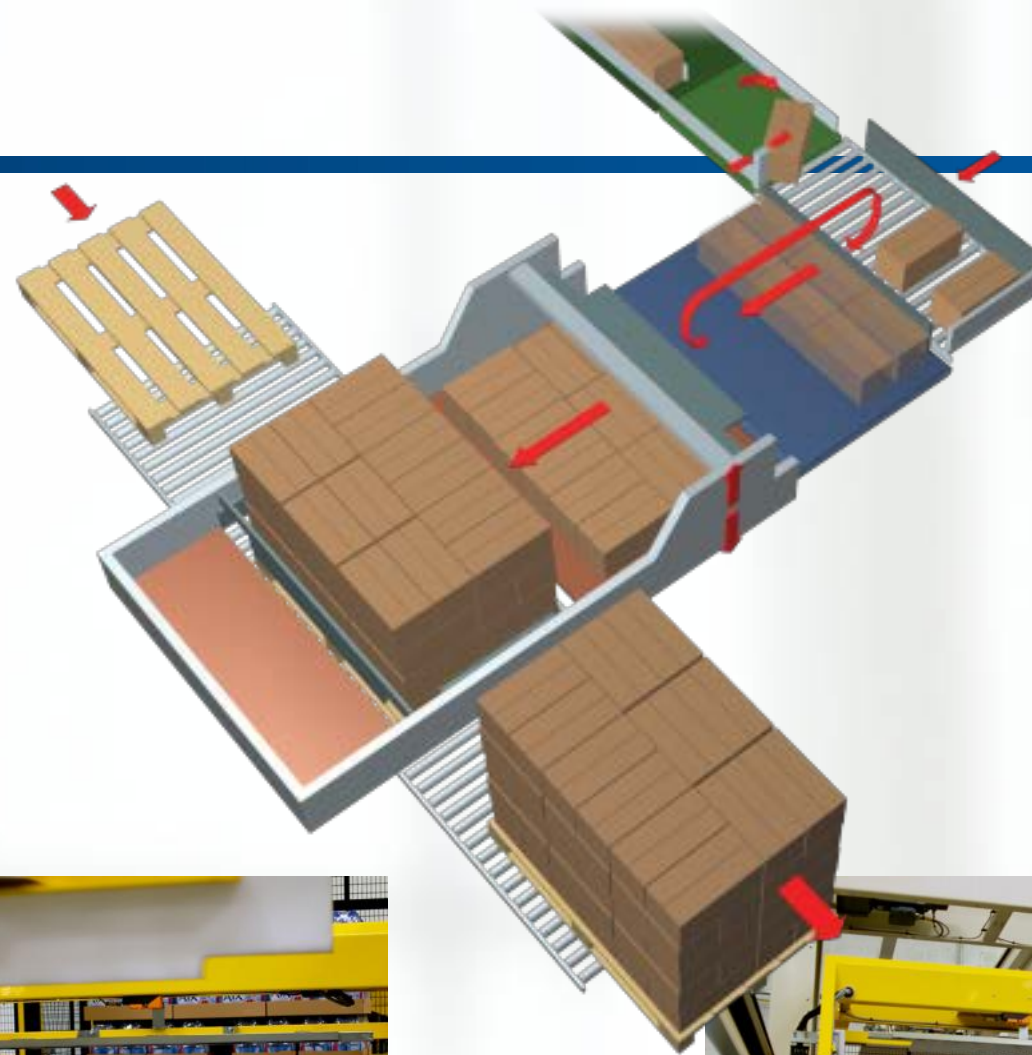


- Modular and industrial design
- Speed up to 280 layers/h
- Saving in energy
- Eco-design



# Pal-Pack 4000

Automatic Layer by Layer Palletizer





## A palletizing solution to meet your specific requirements:

### ■ PERFORMANCE AND PRODUCTIVITY

- A complete series of conventional palletizers adapted to the market/product mix
- Peripheral modules complete the equipment: sheet insertion on the pallet and between layers, automatic pallet distribution, pallet handling and transfer...
- A extremely user-friendly HMI provides direct access to the various parameters of the installation
- No interruption in flow between two production runs
- Pal-Designer software for creating and simulating programs in real time
- Instant programming of patterns

### ■ RELIABILITY AND ECO-DESIGN

- Fitted with an "electronic spacer" layer preparation system, the PAL-PACK 4000 palletizer series guarantees total respect of your product, irrespective of type and pallet pattern
- Layers are centered on the pallet to ensure even weight distribution on the pallet perimeter
- Fully compliant with NF01-005 standard
- Identification of the environmental profile by ATEP V2 standardized software
- Reduction in energy consumption, recyclable equipment

### ■ ERGONOMICS AND MODULARITY

- Easy operator access with maximum safety
- Minimum footprint
- Layer positioning module on dual platform model fitted with a front slat table which rolls up
- Customized, upgradeable solution



## First in line

Cermex  
La Gare - B.P.4 - 85292 Saint-Laurent-sur-Sèvre - France  
Tel. : +33 (0) 251 641 401

Gebo Cermex Headquarters  
Rue du Commerce, CS 73455 Reichstett - 67455 Mundolsheim - France  
Tél. : +33 (0) 388 183 850

■ [contact.us@gebocermex.com](mailto:contact.us@gebocermex.com)

■ [www.gebocermex.com](http://www.gebocermex.com)

