



## HALVING MACHINE 2

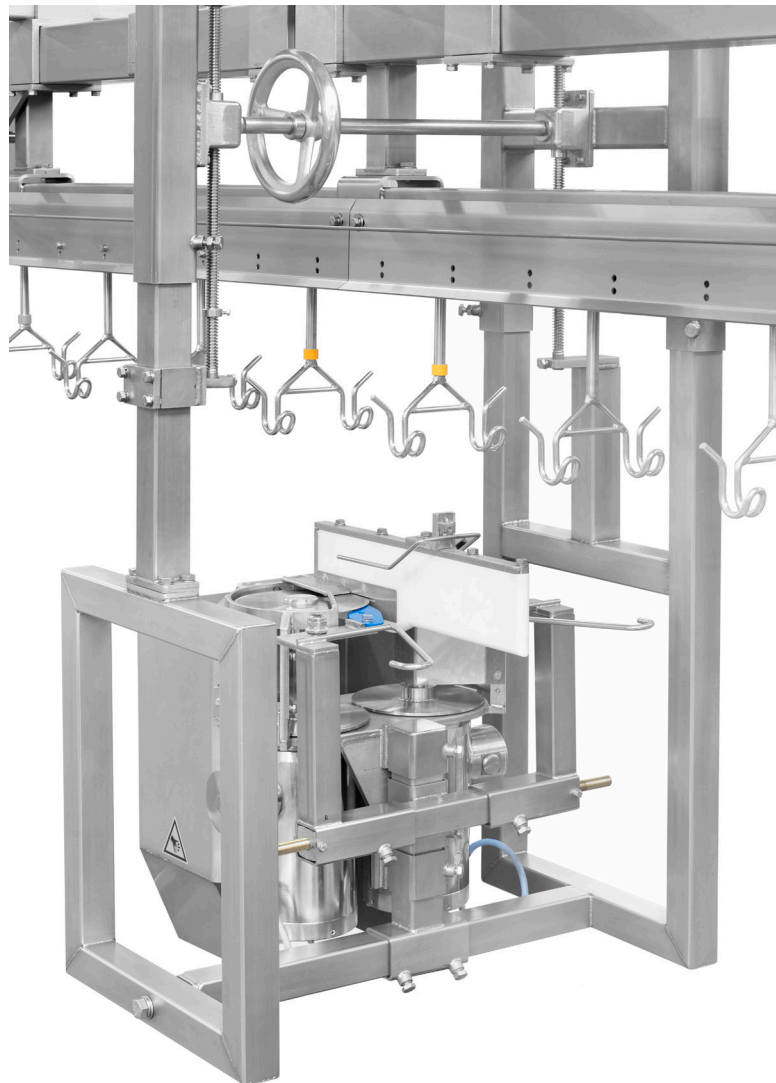


foodmate

Poultry Processing Systems

The Foodmate Halving Machine 2 removes the breast bone from a half bird. The lengthwise half cut chicken (done by the precut machine) will run into this module, breast side first, and will be guided on the side of the hips into the module. The Halving Machine can be part of an existing cut-up line and is designed for partial processing

of poultry goods, especially chicken. The Foodmate Halving Machine 2 contains a stainless steel frame and motor, requires minimal maintenance, and is easy to clean. The Halving Machine 2 is suitable for all cut-up systems.





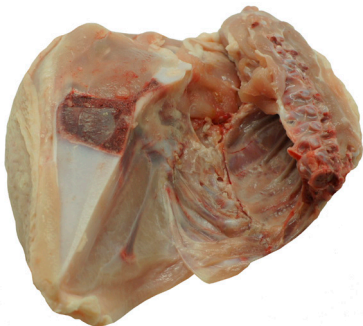
## HALVING MACHINE 2

### Key Benefits:

- Allows for a maximum of 6,000 birds per hour

### Technical Specifications:

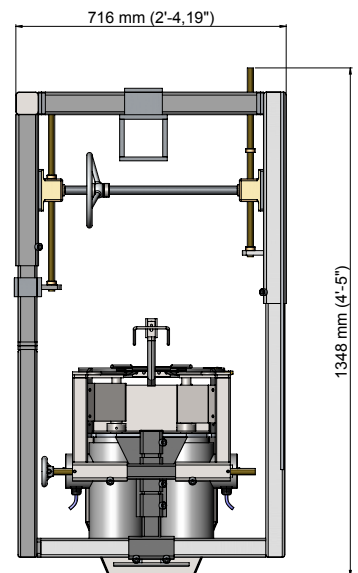
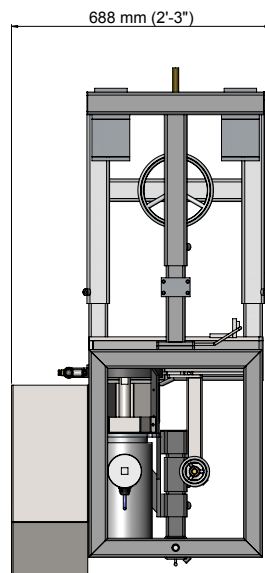
- Stainless steel frame and motor
- Motor (IP66) power is 2 x 0,75 kW
- Machine dimensions:
  - Length: 716 mm
  - Width: 688 mm
  - Height: 1350 mm
  - Weight: approx. 150 kg



Foodmate is an equipment manufacturing company based in the Netherlands. Founded in 2006, we focus primarily on poultry processing, and we recently launched Foodmate US, expanding our worldwide distribution into North America. Driven by research, paired with unmatched knowledge and decades of experience, it's our mission to innovate, automate and bring cost-effective solutions to the industry.

Our product line spans a wide assortment of processing equipment designed for live bird handling, killing and de-feathering, eviscerating, chilling, weighing, cut-up systems, deboning, and more. In addition to manufacturing, we provide an extensive variety of spare parts and service for other processing equipment and reconditioned machines.

Our team represents decades of industry knowledge and experience resulting in the engineering, development and implementation of new designs for our clients and their ever-changing needs.



FOODMATE B.V.  
Röntgenstraat 18 • 3261 LK Oud-Beijerland  
P.O. Box 1405 • 3260 AK Oud-Beijerland  
The Netherlands  
Phone: +31-186 630240 • Fax: +31-186 630249  
info@foodmate.nl  
www.foodmate.nl

FOODMATE US, Inc.  
300 Wilbanks Drive, Ball Ground, GA 30107  
P.O. Box 4116, Canton, GA 30114  
U.S.A.  
Phone: + 1-678-819-5270 (U.S.) • Fax: +1-678-819-5273  
info@foodmateusa.com  
www.foodmateus.com



foodmate