

DELTA 3000 3SS

DELTA



www.ilapak.com



PACKAGING MACHINERY

TECHNICAL SPECIFICATIONS

Machine speed	Up to 70 cycles per minute (with zipper), up to 100 cycles per minute (without zipper) Production output depends on film sealability and product characteristics.	
Product dimensions		
LENGTH	Up to 500mm - 19.7" standard	
WIDTH	Up to 350mm - 13.8" standard	Max width + height = 440 mm - 17.3" standard
HEIGHT	Up to 100mm - 3.9" standard	
Film cut-off	Min 150mm - 5.9" / Max 600mm - 23.6" Depending on film and product characteristics.	
Wrapping materials	Barrier laminate film, flanged zipper type ZE 100	
Film reel dimensions		
CORE Ø	76.2mm - 3" standard	
OUTER Ø	350mm - 13.8" standard	
WIDTH	max 900mm - 35.4" standard	
Film reel max weight	Depending on film reel width, up to 75 kg - 165 lbs	
Electronic platform	Industrial PC	
Power requirement	From 220 to 480 V, 50/60 Hz, 5kVA	
Compressed air	6 bar, 200l/min	
Machine weight	1500 Kg - 3300 lbs	

MAIN STANDARD FEATURES

Web Directional Zipper Applicator.

Long-dwell sealing head.

6 servo motors to control infeed, rollers, jaws, belt, zipper unwind and film (additional motors with automatic feeders).

User friendly 10" colour VGA touch screen operator interface with intuitive icons.

128 programs (additional memory on request).

Automatic product size change.

Integrated temperature control.

Film tensioning and power unwind system controlled by loadcell.

Electronic diagnostic on-board.

No product/ no bag.

Misplaced product detection system.

I/O for peripheral units (printer, labelers, gas control, etc.)

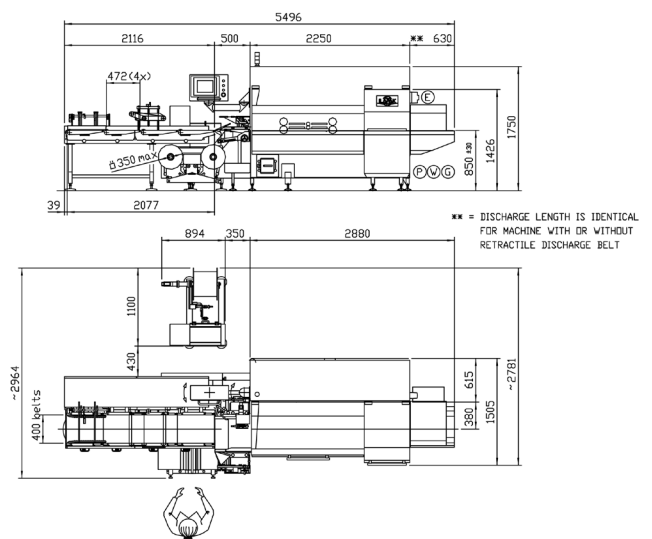
Automatic sealing rollers height adjustment.

Double film reel mounting with self-centering cones, right hand machine version, 3m long infeed, standard.

Robust, hygienic, easy to clean design, epoxy powder coating standard or (optional) stainless steel finishing.

Please discuss your needs with our local representative to configure these machines to your product's specific requirements.

ILAPAK is ISO 9001:2000 certified



All measurements not specified in inches are given in millimeters.

These specifications are not binding. We reserve that right to change them without prior notice.