





F 420

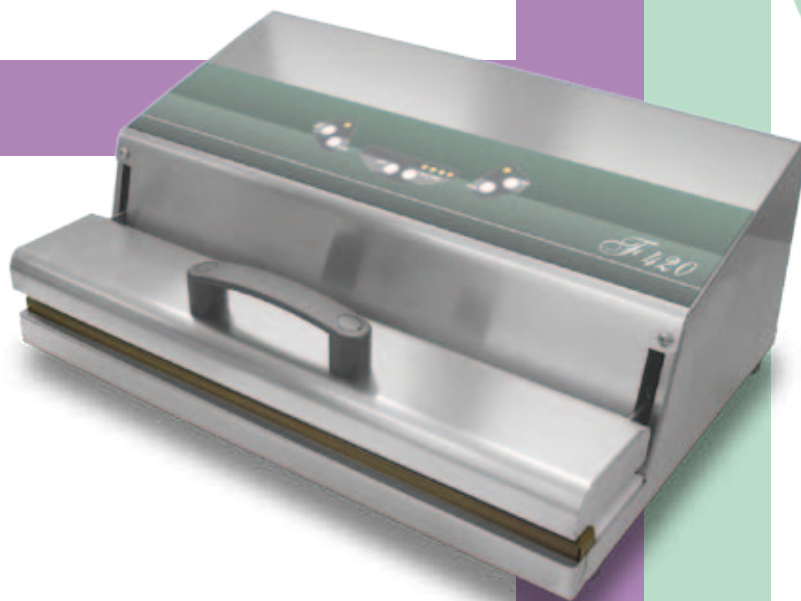
DATI TECNICI - TECHNICAL DATA

 Carrozzeria: ACCIAIO INOX
Dimensioni: mm 472x320x177h
Peso: kg 13
Lungh. saldatura: 420 mm
Tensione: 230V 50Hz
Portata nominale pompa: 30 lt/min autolubrificante
Potenza massima assorbita: 1000 W

 Bodywork: STAINLESS STEEL
Size: mm 472x320x177h
Weight: kg 13
Length of seal: 420 mm
Voltage: 230V 50Hz
Nominal pump speed: 30 lt/min self-lubricating
Maximum power absorption: 1000 W

 Carrosserie: ACIER INOXYDABLE
Dimensions: mm 472x320x177h
Poids: kg 13
Largeur de soudure: 420 mm
Voltage: 230V 50Hz
Débit nominal pompe: 30 lt/min autolubrifiant
Puissance maximale absorbée: 1000 W


 Carrocería: ACERO INOXIDABLE
Medidas: mm 472x320x177h
Peso: kg 13
Largo de soldadura: 420 mm
Tensión: 230V 50Hz
Capacidad nominal: 30 lt/min autolubrificada
Potencia absorbida máxima: 1000 W



Comandi digitali 6 prog.
Comands digital 6 prog.
Commande digital 6 prog.
Comandos digitale 6 prog.

DESCRIZIONE / DESCRIPTION / DESCRIPTION / DESCRIPCIÓN

 Sensore di vuoto
Inizio ciclo: con pressione su coperchio

 Vacuum sensor
Starting cycle: pushing the cover

 Capteur de vide
Debut cycle vide/soudure: avec pression sur le couvercle

 Sensor del vacío
Comienzo del ciclo: presión en la tapa

FRIULMED s.r.l. unipersonale

Sede legale: Viale San Marco, 14 - 34074 Monfalcone (GO) - ITALY
Sede amm.va/Magazzino: Via dell'artigianato 26/a - 30024 Musile di Piave (VE) - ITALY
Office: tel. +39.0481.412025 - +39-0421.560942 - fax: +39.0421.456325 -
CODICE FISC. E P.IVA: 00448700310 - www.friulmed.it - email: info@friulmed.it

www.friulmed.it
email: info@friulmed.it



MACCHINE A ESTRAZIONE ESTERNA

