

vegatronic 500 combo



www.ilapak.com



ILAPAK
PACKAGING MACHINERY

vegatronic

500

ILPAK is ISO 9001:2000 certified

TECHNICAL SPECIFICATIONS	S	P	SP	MAIN FEATURES
Machine speed	Depending on multihead weigher capability			<ul style="list-style-type: none"> • PC-controlled machine with coloured touch-screen display • Multi-language interface • Easily programmable 100 product recipes • Integrated temperature control • Machine diagnostics • Access password • Robust mechanical construction with small footprint • Reduced product drop height • Servo-driven horizontal jaw carriage • Quick bag size change-over • Bag length electronically measured and adjustable • No-fill-no-bag function • Complete synchronization of ancillary equipment such as weigher, printer, labeller, dosers, etc.
Bag size				
WIDTH MIN	50mm-2.0"	50mm-2.0"	50mm-2.0"	
WIDTH MAX	270/280*mm-10.6/11.0"	260/270*mm-10.2/10.6"	270/260mm-280/270*mm	
LENGTH	330mm-13.0"	330mm-13.0"	330mm-13.0"	
Wrapping materials	Heat sealable materials, such as polypropylene, barrier films, laminates, as well as polyethylene films.			
Film reel dimensions				
REEL WIDTH MAX	580mm-22.8"	580mm-22.8"	580mm-22.8"	
REEL OUTER Ø MAX	400mm-15.7"	400mm-15.7"	400mm-15.7"	
REEL CORE Ø MAX	76mm-3.0"	76mm-3.0"	76mm-3.0"	
Film reel max weight	100Kg-220lbs	100Kg-220lbs	100Kg-220lbs	
Sealing system	Brushless motor horizontal jaws-Pneumatic vertical seal bar			
	Standard heat-seal jaws and vertical seal bar	Ilaseal sealing system	Both S & P system	
Electronic control	PC-based electronic platform			
Program memory	100 programs			
HMI	12" colour touch screen			
Power req. (optional excluded)	AC 400 V+/-5%, 3 phase, neutral, ground 50/60Hz, 4.4 kW, 7A			
Compressed air	350-500NI/min, 7 bar	500-900NI/min, 7 bar	Same as per S or P	
Machine finish	Electrostatic epoxy powder coating-Stainless steel version *			
Machine handing	Right hand version, left hand version *			
Machine dimensions	As per layout shown below			
Machine weight	Approx. 600kg – 1323lbs			

* optional

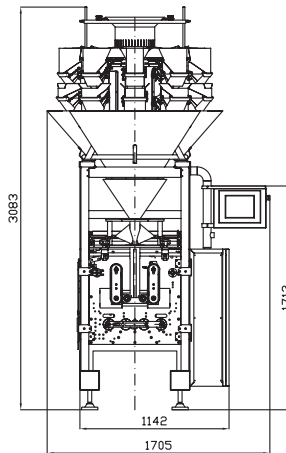
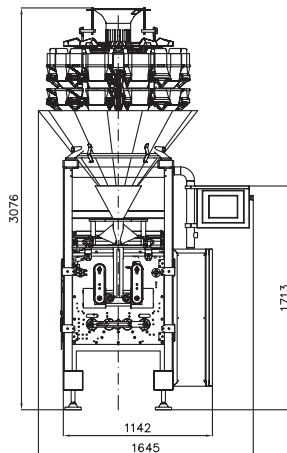
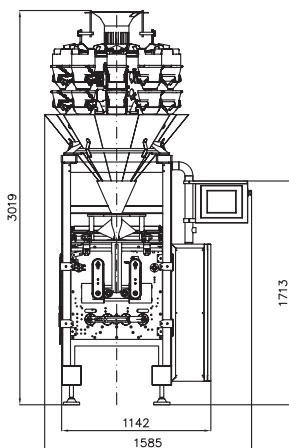
weightronic

ILPAK is ISO 9001:2000 certified

TECHNICAL SPECIFICATIONS	EDA 10-17	EDA 10-30	WA 10-25	MAIN FEATURES
Buckets	Double flap	Double flap	Single or double flap	<ul style="list-style-type: none"> • Stainless steel execution • Plain or embossed* plate (WA 10-25 only) execution according to application • Pool and Weigh buckets driven by stepper motors • Fully enclosed radial feeder drives • Tools-free quick-release contact parts • Weighing or counting software mode
Heads	10	10	10	
Volume	1.7 litre	3.0 litre	2.5 litre	
Drive	High speed stepper motors			
Product distribution	Vibrated distribution cone with loadcell to control product infeed			
Product contact parts	Stainless steel AISI 304			
Weighing speed	Up to 60 wpm depending on product characteristics, target weight, and feeding conditions	Up to 60 wpm	Up to 70 wpm	
Loadcells	C3 accuracy class, OIML approved R76 class			
Machine finish	AISI 304	AISI 304	AISI 304	
Protection grade	IP 54	IP 54	IP 65	
Machine dimensions	As per layout shown below			
Machine weight	approx. 330 Kg - 726 lb	approx. 330 Kg - 726 lb	approx. 530 Kg - 1166 lb	

* optional

Please discuss your needs with our local representative to configure these machines to your product's specific requirements.



All measurements not specified in inches are given in millimeters.

These specifications are not binding. We reserve the right to change them without prior notice.



PACKAGING MACHINERY

www.ilpak.com