



YouTube

IP 50-80-120-180 XP BA



impastatrici per carne
meat mixers



IP 180 XP BA

- Moderno design e robusta struttura in AISI 304 a forte spessore.
- Vasca ribaltabile con sistema di blocco automatico e blocco di sicurezza.
- Ruote inox girevoli e con freno (2).
- Sistema classico con 2 alberi affiancati.
- Pale in acciaio inox AISI 304 facilmente rimovibili senza attrezzi.
- Carter con protezione totale della parte riduttori/comandi.
- Riduttore a bagno d'olio con ingranaggi elicoidali temperati e rettificati.
- Protezione dai liquidi a doppio paraolio: su vasca e su riduttore.
- Sistema di controllo con comandi in acciaio inox IP 67 di serie:
 - marcia avanti e indietro
 - automatismo con autospegnimento
 - automatismo con inversione
- Coperchio in acciaio inox con micro di sicurezza.
- Carico minimo 40% capienza vasca.
- Ideale anche per impasti duri e insalate.

Opzionale:

- Tramoggia aggiunta ingredienti.



1. Ribaltamento vasca
Tank overturn



2. Pale facilmente rimovibili
Removable mixing arms



push	x1	o / or	x1	Manuale continuo <i>Manual continuous</i>
	x2	o / or	x2	Timer 1 Min
	x1	+	x1	Inversione auto 2 min <i>Auto reverse 2 min</i>

3. Sistema di controllo
Control system

- *Modern design and strong AISI 304 stainless steel construction*
 - *Tilting tank with automatic locking system and safety lock*
 - *Stainless steel swivel wheels with lock (2)*
 - *Two mixing arms system*
 - *Removable AISI 304 stainless steel mixing arms (no tools required)*
 - *Total protection of gear box/control panel*
 - *Oil-bath gear box, ground and tempered helical gears*
 - *Double seal on tank and gear box*
 - *Stainless steel IP 67 controls:*
 - *forward and reverse*
 - *auto-off feature*
 - *auto-function with reverse*
 - *Stainless steel cover with safety microswitch*
 - *Minimum loading required: 40% max capacity*
 - *Perfect for hard mix and salad*
- Optional:**
- *Feeding tray to add ingredients.*



IP 50 XP BA

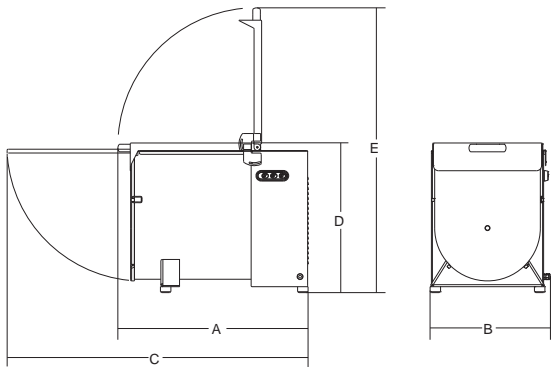


IP 80 XP BA

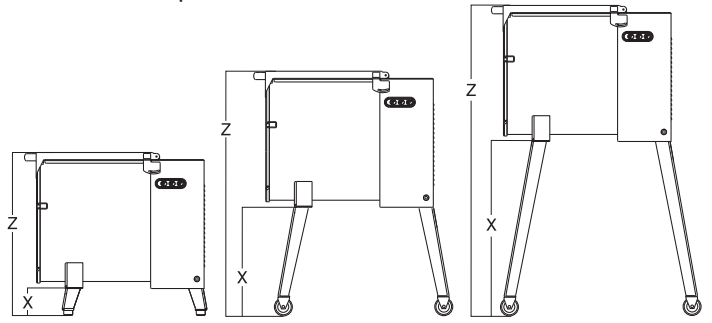


IP 120 XP BA

IP 30-50 M Y14



IP 30-50 M Y14 optionals



Gambe basse con piedino
Short legs with feet

Gambe medie con ruote e freno
Medium legs with wheels and brake

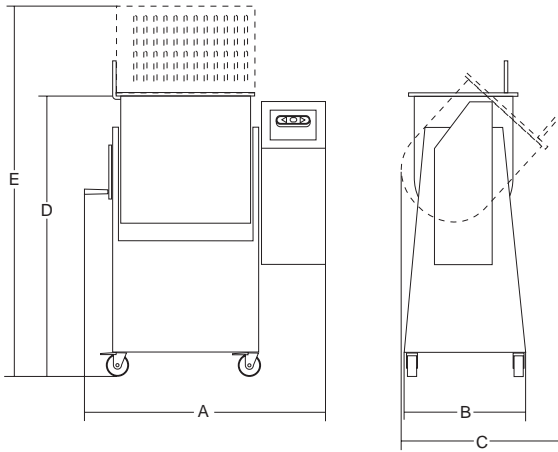
Gambe alte con ruote e freno
Longer legs with wheels and brake

IP 30 M Y14
X: 150 mm / Z: 650 mm
IP 50 M Y14
X: 150 mm / Z: 720 mm

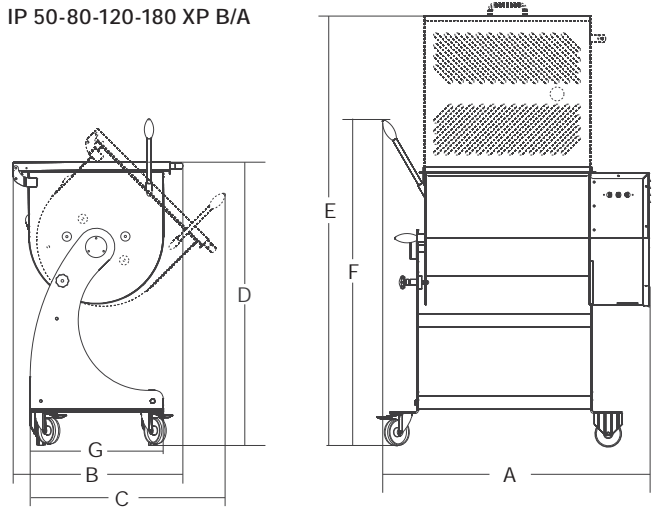
IP 30 M Y14
X: 440 mm / Z: 940 mm
IP 50 M Y14
X: 440 mm / Z: 1010 mm

IP 30 M Y14
X: 610 mm / Z: 1110 mm
IP 50 M Y14
X: 610 mm / Z: 1180 mm

IP 50-120 M-B



IP 50-80-120-180 XP B/A



	Potenza Power Spannung Puissance	Alimentazione Power source Betriebsspannung Alimentation	Dimensioni vasca Tank dimensions Becken abmessungen Dimensions cuve	Capacità Capacity Kapazität Capacité	A	B	C	D	E	F	G	Peso netto Net weight Nettogewicht Poids net	Dimensioni imballo Shipping Verpack abmessungen Dim. emballage	Peso lordo Gross weight Brutogewicht Poids brut
	watt/Hp		mm	lt/Kg	mm	mm	mm	mm	mm	mm	mm	Kg	mm	kg
IP 30 M Y14	1ph 850/1,1 3ph 1100/1,5	230-400V/50Hz	300x400	42/30	680	365	1120	530	975	-	-	49	720x570x770	59
IP 50 M Y14	1ph 850/1,1 3ph 1100/1,5	230-400V/50Hz	410x480	88/50	750	465	1250	595	1120	-	-	59	870x840x760	74
IP 50 M New	1ph 850/1,1 3ph 1100/1,5	230-400V/50Hz	400x470	88/50	840	500	750	1075	1280	-	-	96	1200x670x1300	116
IP 50 B	1500/2	230-400V/50Hz	400x470	88/50	840	500	750	1075	1280	-	-	100	1200x670x1300	120
IP 120 M	1850/2,5	230-400V/50Hz	640x500	163/120	1000	500	820	1100	1300	-	-	125	1200x670x1300	145
IP 120 B	1850/2,5	230-400V/50Hz	640x500	163/120	1000	500	820	1100	1300	-	-	125	1200x670x1300	145
IP 50 XP BA	1ph 370/0,5 (x2) 3ph 530/0,7 (x2)	230-400V/50Hz	420x500	88/50	810	630	730	1030	1617	1220	500	85	1200x670x1300	105
IP 80 XP BA	1ph 370/0,5 (x2) 3ph 530/0,7 (x2)	230-400V/50Hz	620x500	110/80	1000	630	730	1030	1617	1220	500	90	1200x670x1300	110
IP 120 XP BA	1ph 750/1 (x2) 3ph 1100/1,5 (x2)	230-400V/50Hz	660x550	163/120	1092	700	855	1030	1717	1209	620	138	1450x750x1300	167
IP 180 XP BA	1ph 750/1 (x2) 3ph 1100/1,5 (x2)	230-400V/50Hz	995x550	250/180	1422	700	855	1030	1717	1209	620	152	1450x750x1300	182
	Potencia Potência Мощность	Alimentación Alimentação Электропитание	Dimensiones's cuba Dimensiones's tanque Размеры ванны	Capacidad Capacidade Емкость	A	B	C	D	E	F	G	Peso neto Peso líquido Вес нетто	Dimensiones embalaje Dimensiones embalagem Размеры упаковки	Peso bruto Peso bruto Вес брутто