



BEST & DONOVAN

**RED STREAK
MODEL "8E" & "10E"
PRIMAL CUT SAWS**

**MARK "II"
HOG BREASTBONE OPENER SAW**

(DOUBLE GEAR HEAD DESIGN)

PARTS AND SERVICE MANUAL

USDA
APPROVED

CE

BEST & DONOVAN

5570 CREEK ROAD, CINCINNATI, OHIO 45242, USA

TOLL FREE: 1-800-553-2378 TEL.: 1-513-791-9180

FAX: 1-513-791-0925 CABLE: WEPCO

WARRANTY

Best & Donovan warrants the machine against defective parts & workmanship for six (6) months from date of factory shipment. In the fulfillment of its warranty, the sole obligation of Seller shall be to repair or replace, at its option F.O.B. its factory, shipping charges prepaid, and which after inspection by Seller are found to be defective. Buyer shall notify Seller of defect in writing, promptly upon discovery, within the warranty period. This warranty does not cover defects caused by corrosion or normal deterioration. It does not extend to consequential damage, loss or delay associated with a warranty defect and it does not cover any costs of labor, travel or other expenses associated with the repair or replacement of defective parts. Seller assumes no liability for product loss or other claims whatsoever arising out of the use or application of the machine in Meat Slaughtering/Processing operations, whether the machine is used alone or in conjoint use with other Meat Slaughtering/Processing Machines or Processes.

This warranty is voided if repairs, replacements or alterations are made by others without prior authorization by Seller. Notwithstanding the foregoing, Seller's warranty obligations with respect to any items not manufactured by Seller shall not exceed the obligations undertaken by the manufacturer thereof under express warranty to the Seller. This express warranty is in lieu of all other warranties of fitness of the machine for any particular purpose.

SERVICE INFORMATION AND PREVENTATIVE MAINTENANCE SCHEDULE FOR BEST & DONOVAN

BEST & DONOVAN REALIZES THAT THERE MAY BE MANY DIFFERENT APPROACHES TO PROPER MAINTENANCE, ASSEMBLY, DISASSEMBLY, AND ADJUSTMENT PROCEDURES. THE FOLLOWING PROCEDURES SHOULD BE USED AS A GUIDELINE AND WHETHER ACCEPTED OR USED IN THEIR ENTIRETY OR PARTIALLY, IS NOT A SUBSTITUTE FOR PROPER MECHANICAL ABILITY AND/OR KNOWLEDGE.

ONLY PERSONNEL WITH PROPER MECHANICAL AND TECHNICAL SKILLS SHOULD ATTEMPT ANY SERVICE PROCEDURES.

THE FOLLOWING SERVICE INFORMATION WILL DESCRIBE IMPORTANT NOTATIONS REQUIRING SPECIAL ATTENTION BY THE TECHNICIAN(S) PERFORMING SERVICE TASKS. THEY ARE : **WARNING**, **CAUTION**, and **NOTE**.

WARNING : WILL DESCRIBE CONDITIONS THAT EXIST OR POTENTIALLY EXIST THAT CAN CAUSE INJURY OR DEATH.

CAUTION : WILL DESCRIBE CONDITIONS THAT EXIST OR POTENTIALLY EXIST THAT CAN CAUSE INJURY OR EQUIPMENT FAILURE.

NOTE : WILL DESCRIBE A SPECIFIC HELPFUL PROCEDURE.

RECEIVING & INSPECTION

INSPECT YOUR BEST & DONOVAN RED STREAK/HBBO SAW FOR POSSIBLE DAMAGE AS SOON AS YOU RECEIVE IT. IF YOU DISCOVER ANY DAMAGE, NOTIFY CARRIER'S AGENT AT ONCE AND REQUEST HIM TO INSPECT THE DAMAGE, ALSO NOTIFY BEST & DONOVAN. CHECK PACKING LIST AGAINST THE CONTENTS.

INSTALLATION OF SAW

COUNTER-BALANCER PART # 6342500

MODELS "8E" & "10E" RED STREAK
MARK II HOG BREASTBONE OPENER

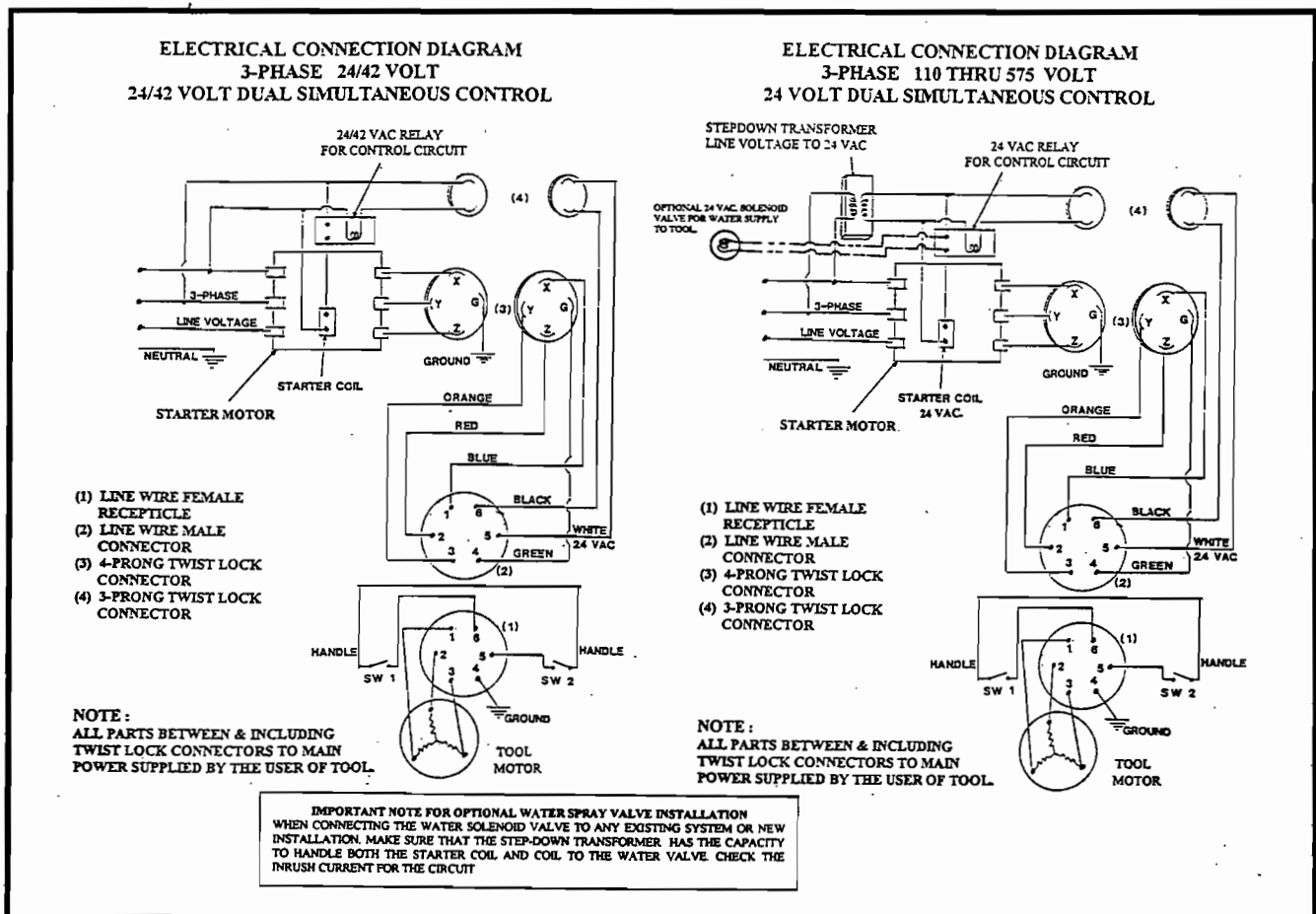
ELECTRICAL INSTALLATION

NOTE : MAKE SURE THAT THE TOOL IS INSTALLED TO THE SAME VOLTAGE AND PHASE INDICATED ON THE TOOL NAMEPLATE.

THIS TOOL IS DESIGNED TO OPERATE THROUGH A REMOTE STARTER UNIT THAT USES A STEP-DOWN TRANSFORMER FOR THE CONTROL VOLTAGE TO THE DUAL CONTROL HANDLES. LESS THAN 50 VOLTS IS RECOMMENDED FOR THE CONTROL VOLTAGE.

THE FOUR WIRE SECTION OF THE LINE WIRE IS CONNECTED TO THE LINE VOLTAGE. THE THREE WIRE SECTION OF THE LINE WIRE IS CONNECTED TO THE CONTROL VOLTAGE.

NOTE : ANY HIGHER VOLTAGE FOR THE CONTROL CIRCUIT WILL DAMAGE OR BURN OUT THE HANDLE SWITCHES.



CHECKING DIRECTION OF ROTATION

BEFORE PLACING THE TOOL INTO OPERATION, PLACE THE TOOL ON A WORKBENCH OR TABLE TO CHECK BLADE ROTATION. THE SAW BLADE MUST ROTATE IN A COUNTER-CLOCKWISE DIRECTION. TO REVERSE THE DIRECTION, SWITCH TWO OF THE BLACK WIRES IN THE 4-PRONG PLUG AND TRY AGAIN.

WARNING

ALWAYS EXERCISE CARE WHEN OPERATING OR PERFORMING MAINTENANCE, REPAIRS AND ADJUSTMENTS. ALWAYS DISCONNECT ELECTRICAL OR AIR CONNECTOR BEFORE ATTEMPTING TO WORK ON THE MACHINES. BE SURE ALL ELECTRICAL MACHINES ARE PROPERLY GROUNDED. NEVER ALLOW ANY PART OF YOUR PERSON OR ANY OTHER PERSON TO BE IN THE PATH OF THE BLADE WHEN THE MACHINE IS IN SERVICE. ONLY GRIP MACHINE BY THE HANDLES PROVIDED.

MAINTENANCE

PREVENTATIVE MAINTENANCE IS THE FIRST STEP OF GOOD TOOL MAINTENANCE. A PERIODIC CHECK SHOULD BE MADE TO REPLACE WORN PARTS AND TO INSPECT LUBRICATION LEVELS & EFFECTIVENESS. A WORN PART REPLACED IN TIME MAY SAVE REPAIRS LATER.

THIS IS A PRECISION MACHINE MADE UP OF PRECISION PARTS AND SHOULD BE HANDLED WITH EXTREME CARE. DO NOT SQUEEZE MACHINE OR PARTS IN A HOLDING DEVICE OR OTHERWISE MISUSE. TOO MUCH PRESSURE EXERTED IN A HOLDING DEVICE MAY CAUSE DISTORTION TO THE PART. BE SURE THAT YOU HAVE THE CORRECT TOOLS AND FIXTURES BEFORE ASSEMBLING (OR DISASSEMBLING) THIS TOOL. WHEN ASSEMBLING (OR DISASSEMBLING) PARTS WHICH HAVE A PRESS FIT, APPLY PRESSURE EVENLY TO THE PARTS. TO ASSEMBLE (OR DISASSEMBLY) BEARINGS, THE PRESSURE SHOULD BE APPLIED TO THE FACE OF THE INNER OR OUTER RACE, WHICHEVER IS ADJACENT TO THE MATING PART. IF THIS IS NOT DONE, IT WILL DAMAGE THE BEARING RACES MAKING IT NECESSARY TO REPLACE THEM.

OPEN BEARINGS MAY BE WASHED IN ONLY FRESH, CLEAN SOLVENT. BEARINGS SHOULD BE WASHED IN A CONTAINER WITH A SCREENED FALSE BOTTOM TO PREVENT FOREIGN PARTICLES FORM BEING STIRRED UP AND CONTAMINATING THE PART. AFTER CLEANING, BLOW SOLVENT OUT OF THE BEARING WITH DRY, CLEAN AIR & RE-PACK WITH GOOD GRADE BEARING GREASE. DO NOT SPIN BEARING, OR ALLOW IT TO SPIN WHEN BLOWING OFF SOLVENT. DO NOT ATTEMPT TO WASH A SEALED OR SHIELDED BEARING.

BEFORE DISASSEMBLING A TOOL, THE AREA AROUND THE WORK BENCH SHOULD BE CLEAN & FREE FROM METAL CHIPS AND OTHER FOREIGN MATTER. IT IS GOOD PRACTICE TO SPREAD A CLEAN CLOTH ON THE WORK BENCH TO PREVENT THE LOSS OF SMALL PARTS.

IT IS IMPORTANT THAT ALL PARTS ARE THOROUGHLY CLEANED & INSPECTED BEFORE ASSEMBLING. THE SLIGHTEST PARTICLES OF DIRT CAN CREATE EXCESSIVE RUN-OUT IN SPINDLE OR OUT OF SQUARENESS IN THE BEARING MOUNTING, CAUSING VIBRATIONS AND LOSS OF SPEED, ULTIMATELY DAMAGING THE MACHINE.

BEFORE REASSEMBLING, ALL PARTS SHOULD BE WASHED AND INSPECTED, REPLACING ANY WORN OR DEFECTIVE PARTS. APPLYING A SMALL AMOUNT OF GREASE TO STEEL BALLS, SPRINGS AND OTHER SMALL PARTS WILL OFTEN HOLD THEM IN PLACE WHILE REASSEMBLING. LUBRICANT IS RECOMMENDED FOR THE INSTALLATION OF "O" RINGS.

WHEN REPAIRS ARE NECESSARY, CONSULT DRAWING CONTAINING THE PART FOR IDENTIFICATION. WHEN ORDERING REPAIR OR SPARE PARTS, BE SURE TO LIST MODEL NUMBER, PART NUMBER & PART NAME TO ASSURE PROMPT AND ACCURATE SHIPMENT OF YOUR ORDER.

CLEANING

THE SAW BLADE MAY BE DIPPED IN A STERILIZER (180 DEGREE WATER MINIMUM FOR USDA), BUT AVOID DIPPING THE GEAR ASSEMBLY. AVOID USING HIGH PRESSURE WATER WHEN CLEANING TOOL. DO NOT SPRAY IN THE ELECTRICAL MOTOR SECTION OF THE SAW. SPRAY OFF THE SAW AND USE A GREEN PAD TO CLEAN THE TOUGH SPOTS.

LUBRICATION

THE FRONT GEAR HEAD ASSEMBLY IS EQUIPPED WITH TWO (2) GREASE FITTINGS #6036093. THESE FITTINGS SHOULD BE GREASED WITH ONE OR TWO SHOTS OF USDA APPROVED GREASE IN EACH FITTING AT NOON BREAK AND AT THE END OF THE PRODUCTION SHIFT. ONCE A WEEK THE BLADE GUARD SHOULD BE REMOVED AND THE OLD GREASE PURGED WITH NEW. AT THIS TIME CHECK THE GREASE SEAL #8851000 FOR WEAR OR DAMAGE.

DOUBLE GEAR BLADE INSTALLATION

WARNING

ALWAYS MAKE ABSOLUTELY CERTAIN THAT YOUR SAW IS DISCONNECTED FROM THE POWER SOURCE BEFORE REMOVING OR INSTALLING THE SAW BLADE.

CAUTION : IF A TOOTH SHOULD BREAK OFF A BLADE WHILE THE TOOL IS IN OPERATION, THE OPERATOR OR SOMEONE ELSE COULD BE INJURED. ALWAYS INSPECT THE BLADES FOR FATIGUE CRACKS BEFORE INSTALLING OR USING.

PLACE THE SAW BLADE ON THE SAW GEAR (6), ALIGNING THE PINS OF THE GEAR WITH THE HOLES IN THE BLADE ARBOR (CENTER HOLE) OF THE BLADE. INCORRECT SEATING OF THE BLADE WILL CAUSE BAD CUTS AND DANGER TO THE OPERATOR. THE TEETH OF THE BLADE SHOULD POINT DOWNWARD IN A COUNTER-CLOCKWISE DIRECTION. SCREW THE SAW NUT & COVER (1) ONTO THE THREADED COLLAR OF THE SAW GEAR (6) MAKING SURE THE SAW BLADE STAYS SEATED CORRECTLY. THREAD IS RIGHT HANDED. INSERT A PIN THROUGH THE HOLE IN THE BLADE THAT LINES UP WITH THE HOLE IN THE BLADE GUARD (8). USING SAW NUT WRENCH #6114050 AND A SMALL HAMMER. TIGHTEN THE SAW NUT (1) SECURELY.

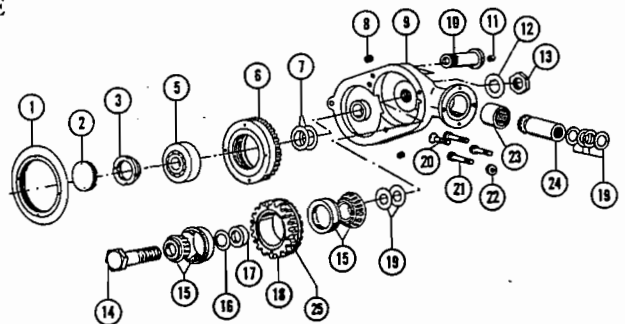
NOTE : IF A PIN IS NOT USED TO LOCK THE BLADE FROM TURNING, IT IS POSSIBLE TO DAMAGE THE GEARS IN THE STANDARD FROM THE IMPACT OF THE HAMMER.

ASSEMBLING OF DOUBLE GEAR STANDARD

1. ASSEMBLE THE MOTOR AND ATTACH THE PINION GEAR (24)
2. INSTALL NEEDLE BEARING (23) INTO THE STANDARD (9) WITH THE LETTERING ON THE BEARING TOWARD THE MOTOR.
3. INSTALL BARE STANDARD (9) OVER PINION GEAR (24) AND SECURE WITH TWO BOLTS (21).
4. SCREW THE DOUBLE GEAR STUD (14) FULLY INTO THE STANDARD.
5. USING A PINION GAUGE #8840100 (NOT SHOWN), SET ON THE TOP OR END OF THE PINION GEAR AND WITH A FEELER GAUGE, MEASURE THE CLEARANCE BETWEEN THE END OF THE PINION GAUGE AND THE SHANK OF THE STUD (14). RECORD THE DIMENSION.
6. REMOVE THE STANDARD (9) FROM THE MOTOR AND INSTALL THE CORRECT AMOUNT OF SHIMS (19), SAME AS THE RECORDED READING BEHIND THE PINION.
7. ASSEMBLE STANDARD TO EXTENSION OR ADAPTER USING 2 BOLTS (21) AND CHECK SHIMMING. REMOVE THE STUD WHEN SHIMMING IS CORRECT.

ADJUSTMENT OF DOUBLE GEAR BEARINGS AND INSTALLATION OF GEARS INTO THE STANDARD.

1. MAKE SURE THE OUTER RACES (15) ARE INSTALLED CORRECTLY ON THE DOUBLE GEAR (18) BY PRESSING IN A VISE OR ARBOR PRESS EVENLY.
2. PRESS THE FIRST INNER BEARING (15) ONTO THE DOUBLE GEAR STUD (14). INSERT THE STUD INTO THE DOUBLE GEAR (18), SLIDE A LUBRICATING SPACER (17) AND THE SECOND INNER BEARING OVER THE STUD. **DO NOT LUBRICATE THE BEARINGS AT THIS TIME.**
3. OBTAIN A 1/2" PIPE NIPPLE APPROX. 2" LONG OR SOMETHING COMPARABLE TO SLIDE OVER THE THREADED END OF THE STUD (14).
4. WITH A VISE OR ARBOR PRESS, SQUEEZE THE HEAD OF THE STUD AND THE PIPE NIPPLE TOGETHER, COMPRESSING THE BEARINGS. WHILE SQUEEZING, MAKE SURE THE GEAR WILL ROTATE FREELY. IF THE GEAR STARTS TO SEIZE, THE ASSEMBLY WILL HAVE TO BE TAKEN APART AND SHIMS (16) ADDED NEXT TO THE LUBRICATING SPACER (17) TO FREE THE BEARINGS. PROPER LOADING OF THE BEARINGS IS ACCOMPLISH WHEN 70-75 TORQUE FOOT POUNDS ARE APPLIED AND THE BEARING SPINS FREELY WITH NO SIDE PLAY IN THE GEAR.



DOUBLE GEAR STANDARD SET-UP CONTINUED

5. DISASSEMBLE THE BEARINGS ONCE THE PROPER LOAD IS SET AND PACK THE BEARINGS WITH APPROVED USDA GREASE. ASSEMBLE AFTER PACKING.
6. INSTALL THE GEAR ASSEMBLY INTO THE STANDARD AND SLOWLY TIGHTEN. YOU ARE NOW TRYING TO SET THE PROPER BACKLASH OF THE GEAR ASSEMBLY TO THE PINION GEAR. THIS IS ACCOMPLISHED BY ADDING, IF NECESSARY, SHIMS (19) BEHIND THE DOUBLE GEAR. THE CORRECT BACKLASH IS WHEN YOU CAN FEEL A MINIMUM OF PLAY BETWEEN THE TWO GEARS MESHING. THERE HAS TO BE SOME BACKLASH OR THE GEARS WILL WEAR PREMATURELY. TIGHTEN THE STUD USING CAUTION NOT TO PULL TOO TIGHT. INSTALL LOCK WASHER (12) AND NUT (13), HOLD THE STUD (14) WHILE TIGHTENING NUT (13) TIGHT. LOCK THE WASHER AROUND THE NUT. PACK THE STANDARD 2/3 FULL OF GREASE AROUND THE PINION AREA.
7. PRESS BEARING (5) INTO THE SAW GEAR (6). PRESS THE STUD (10) INTO THE STANDARD. PRESS BEARING AND GEAR ASSEMBLY ONTO THE STUD (10).
8. CHECK THE CLEARANCE BETWEEN TEETH ON THE SAW GEAR AND TEETH ON THE DOUBLE GEAR. THERE SHOULD BE A CLEARANCE OF APPROX. .010". TO GET THIS CLEARANCE, ADD SHIMS (7) UNDER BEARINGS (5) TO RAISE THE SAW GEAR.
9. INSTALL LOCKING NUT (3), USING WRENCH #6114450 WHEN CORRECT CLEARANCE IS ACCOMPLISHED AND TIGHTEN. (L/H THREADS.)
10. INSTALL BEARING LOCK NUT (2) AND TIGHTEN DOWN USING WRENCH #8861500. (L/H THREADS)
11. GREASE EACH FITTING WITH TWO (2) SHOTS OF GREASE USING GREASE GUN #2102900.
12. BE SURE ALL PARTS HAVE BEEN THOROUGHLY TIGHTENED.

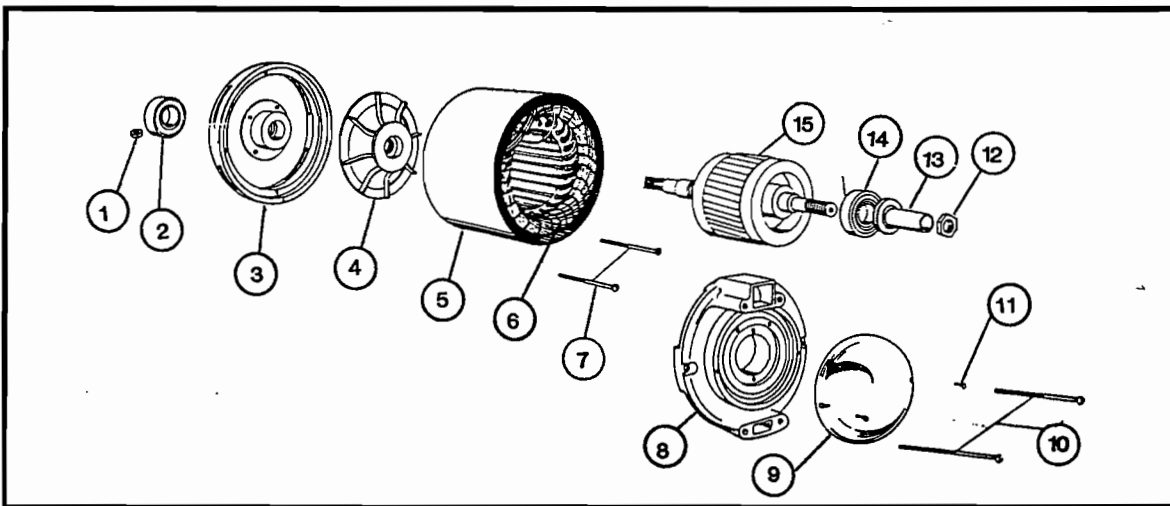
ELECTRIC MOTOR MAINTENANCE

DISASSEMBLY

1. REMOVE THE FRONT HEAD ASSEMBLY COMPLETE, FOUR (4) SCREWS AT THE MOTOR ADAPTER.
2. REMOVE THE REAR HANDLE AFTER DISCONNECTING THE HANDLE SWITCH.
3. REMOVE THE REAR HEAD COVER #9.
4. HOLD THE PINION IN A SOFT JAWED VISE SO THAT THE ROTOR LOCK NUT #12, RIGHT HAND THREADS, AND THE SPACER #13 CAN BE REMOVED.
5. REMOVE THE LONG MOTOR BOLTS #10 AND TAP OFF THE REAR HEAD #8 USING A RUBBER Mallet.
6. REMOVE THE SHORT MOTOR BOLTS #7 AND LIFT OFF THE MOTOR CASE #5 & STATOR #6.
7. HOLD THE ROTOR #15 IN A SOFT JAWED VISE AND UNSCREW THE PINION, LEFT HAND THREADS.
8. CHECK THE BEARING ON THE ROTOR AND IN THE FRONT HEAD. REPLACE IF NECESSARY.
9. THE FAN HAS LEFT HAND THREADS IF IT IS NECESSARY TO REMOVE IT.

REASSEMBLE

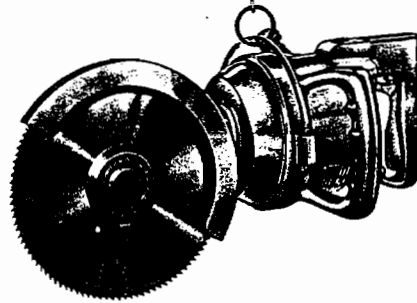
10. REVERSE THIS PROCEDURE TO ASSEMBLE.
11. UNSURE ALL MOUNTING SURFACES ARE SMOOTH AND TIGHT SO THAT THE ROTOR WILL NOT BIND WHEN REVOLVING.



ALL TOOLS ON THE PAGE ARE FEATURE DUAL CONTROL HANDLES

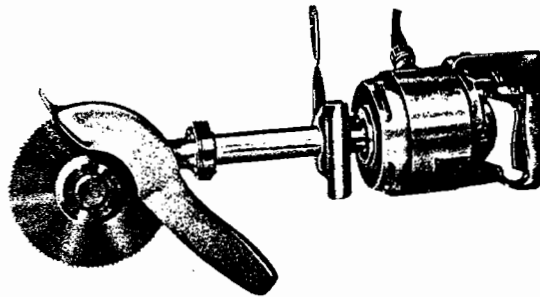
**RED STREAK
PRIMAL CUT SAW**

WEIGHT : 29 LBS. (13.17 Kgs.)
 LENGTH : 21 IN. (533.4 mm.)
 BLADE : 8 IN. (203.2 mm.)
 10 IN. (254.0 mm.)
 COUNTER-BALANCER #6342500



**MARK "II" HOG
BREASTBONE OPENER (HBBO)**

WEIGHT : 38 LBS. (17.25 Kilos.)
 LENGTH : 28 1/2 IN. (711.5 mm.)
 BLADE : 6 1/2 IN. (165.1 mm.)
 8 IN. (203.2 mm.)
 COUNTER-BALANCER #6342500



SAW BLADE DESCRIPTION & SHARPENING

BLADES FOR "8E" RED STREAK & MARK "II" HBBO

PART # 6104200	8" (203.2 mm)	176 TEETH; 8 POINT (7 TEETH/INCH) .0025 - .007 SET/SIDE ALTERNATELY FILE SQUARE FACE, ROUNDED GULLET
PART # 6104400	8" (203.2 mm)	100 TEETH; 5 POINT (4 TEETH/INCH) .0025 - .007 SET/SIDE ALTERNATELY FILE SQUARE FACE, ROUNDED GULLET

BLADES FOR "10E" RED STREAK

PART # 6104600	10" (254.0 mm)	110 TEETH; 4 1/2 POINT (3 1/2 TEETH/INCH) .006 - .011 SET/SIDE ALTERNATELY FILE SQUARE FACE, ROUNDED GULLET
PART # 6104800	10" (254.0 mm)	220 TEETH; 8 POINT (7 TEETH/INCH) .0025 - .007 SET/SIDE ALTERNATELY FILE SQUARE FACE, ROUNDED GULLET

BLADE FOR MARK "II" HBBO "ONLY"

PART # 6104000	6 1/2" (165.1 mm)	142 TEETH; 8 POINT (7 TEETH/INCH) .0025 - .007 SET/SIDE ALTERNATELY FILE SQUARE FACE, ROUNDED GULLET
----------------	-------------------	---

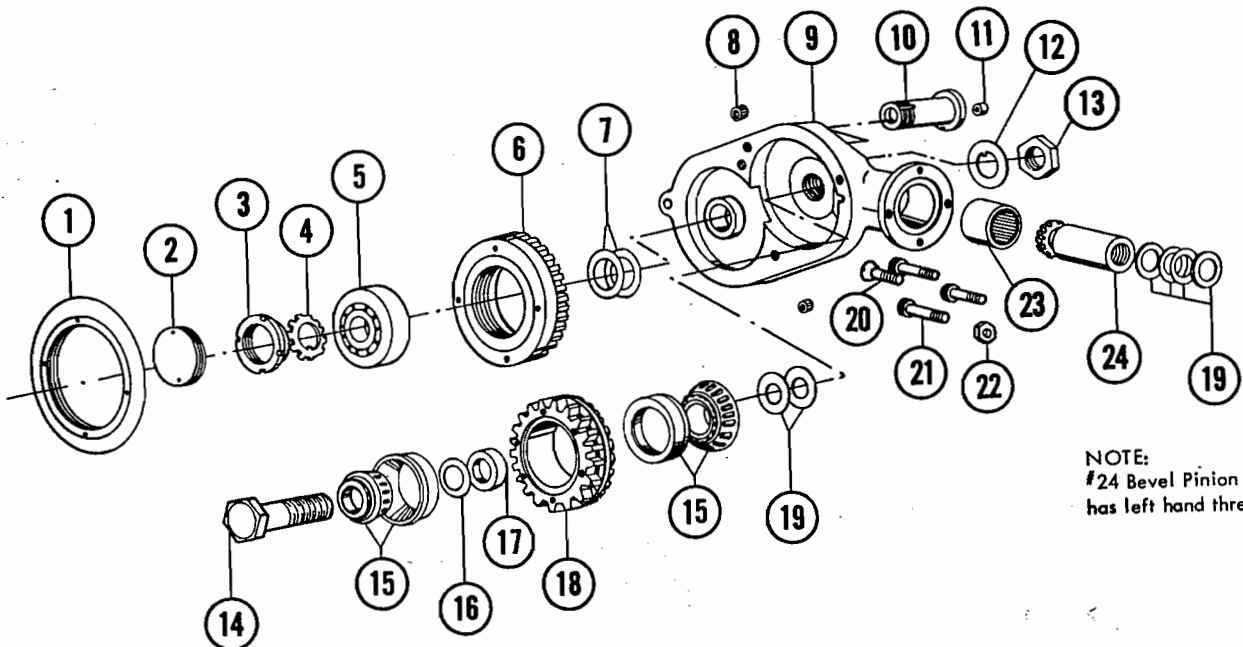
CALL BEST & DONOVAN WITH ANY QUESTIONS ABOUT THE BLADES AVAILABLE FOR THESE TOOLS.

DOUBLE GEAR SAW STANDARD PART LISTING

REF. NO.	PART NO.	DESCRIPTION	QTY.
1	8845000	SAW NUT	1
2	8850000	BEARING LOCK NUT	1
3	8862100	LOCK NUT - LEFT HAND THREAD	1
5	8818093	BEARING	1
6	8848059	SAW GEAR ASSEMBLY	1
7	8849500	SHIM	A/R
8	9902462	LOCK NUT	2
9	8853000	STANDARD	1
10	8862000	STUD (SAW GEAR)	1
11	6036093	GREASE FITTING	2
12	8846600	LOCK WASHER	1
13	8847500	LOCK NUT	1
14	8846500	STUD (DOUBLE GEAR)	1
15	8819093	ROLLER BEARING	2
16	8819200	.002 SHIM	A/R
	8819203	.003 SHIM	A/R
	8819205	.005 SHIM	A/R
	8819210	.010 SHIM	A/R
17	8819100	SPACER	1
18	8854059	DOUBLE GEAR ASSEMBLY	1
19	8840110	.003 SHIM	A/R
	8840105	.005 SHIM	A/R
	8840103	.010 SHIM	A/R
20	9800443	FLAT HEAD SCREW (HBBO)	1
21	9901413	SCREW (HBBO)	3
	9801491	SCREW (ATP)	4
22	9801678	NUT (HBBO)	4
23	8837093	NEEDLE BEARING	1
24	8840000	BEVEL PINION - LEFT HAND THREADS	1
N/S	6114050	PIN WRENCH FOR SAW NUT # 1	
N/S	8861500	PIN WRENCH FOR BEARING LOCK NUT # 2	
N/S	6114450	PIN WRENCH FOR LOCK NUT # 3	
N/S	2102900	GREASE GUN	
N/S	2108000	GREASE GUN NOZZLE	
N/S	8840100	PINION SETTING GAUGE	

FRAME ASSEMBLY COMPLETE WITH GUARD

- 8853350 8" BLADE - COMPLETE FRAME ASSY.
- 8853351 10" BLADE - COMPLETE FRAME ASSY.
- 8856750 HBBO COMPLETE ASSY. - 8" BLADE

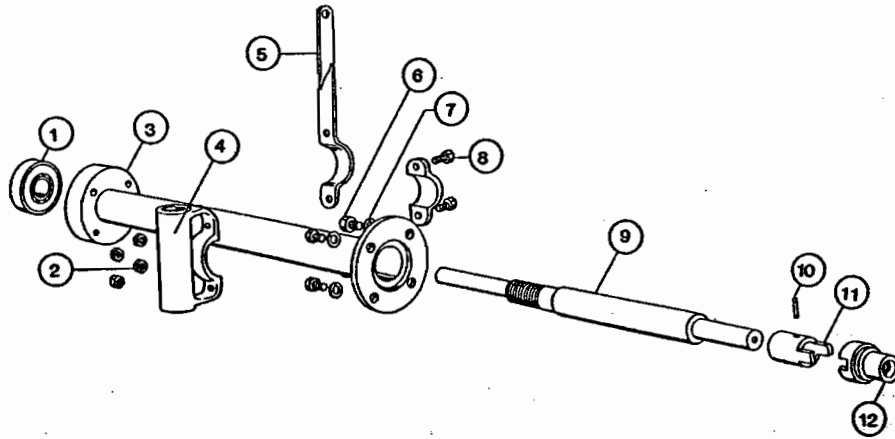


NOTE:
#24 Bevel Pinion Gear
has left hand threads.

MARK "II" ELECTRIC HBBO EXTENSION SECTION

REF. NO.	PART NO.	DESCRIPTION	QTY.
1	8817093	BEARING	1
2	9801678	NUT	4
3	8880000	9" EXTENSION HOUSING	1
4	7710355	DUAL CONTROL SIDE HANDLE COMPLETE (HBBO)	*
	8807050	DUAL CONTROL SIDE HANDLE COMPLETE (RED STREAK)	*
5	8883000	HANGER	1
6	9801409	SCREWS	4
7	9801935	LOCK WASHERS	4
8	9801490	SCREWS	2
9	8881000	9" EXTENSION SHAFT	1
10	9902050	PIN	1
11	8881500	CLUTCH - MALE	1
12	8882000	CLUTCH - FEMALE	1

* SEE SIDE HANDLE PAGE FOR PART NUMBERS

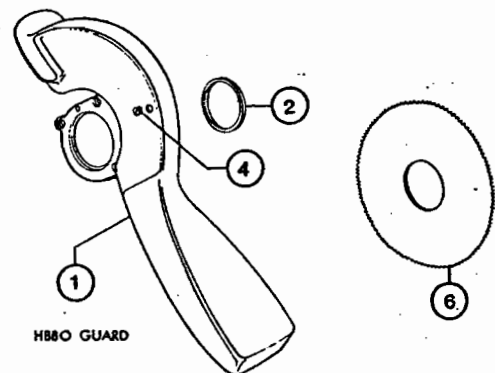
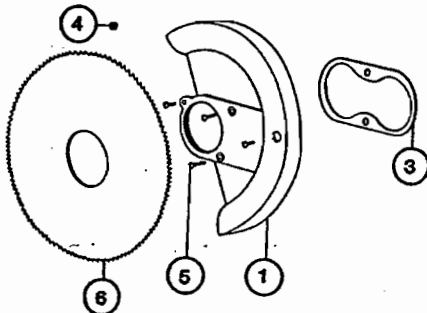


8" & 10" RED STREAK SAW GUARD & BLADE PART LIST

REF. NO.	PART NO.	DESCRIPTION	QTY.
1	8856000	8" SAW GUARD	1
	8856100	10" SAW GUARD	1
2	8851000	GUARD GREASE SEAL	1
3	8857000	GUARD GASKET	1
4	8856693	PLUG	1
5	9800121	SHORT SCREW	1
	9800123	MEDIUM SCREW	1
	9800124	LONG SCREW	2
6	6104200	8" 176 TOOTH/8 POINT BLADE	1
	6104400	8" 100 TOOTH/5 POINT BLADE	1
	6104600	10" 110 TOOTH/5 POINT BLADE	1
	6104800	10" 220 TOOTH/8 POINT BLADE	1

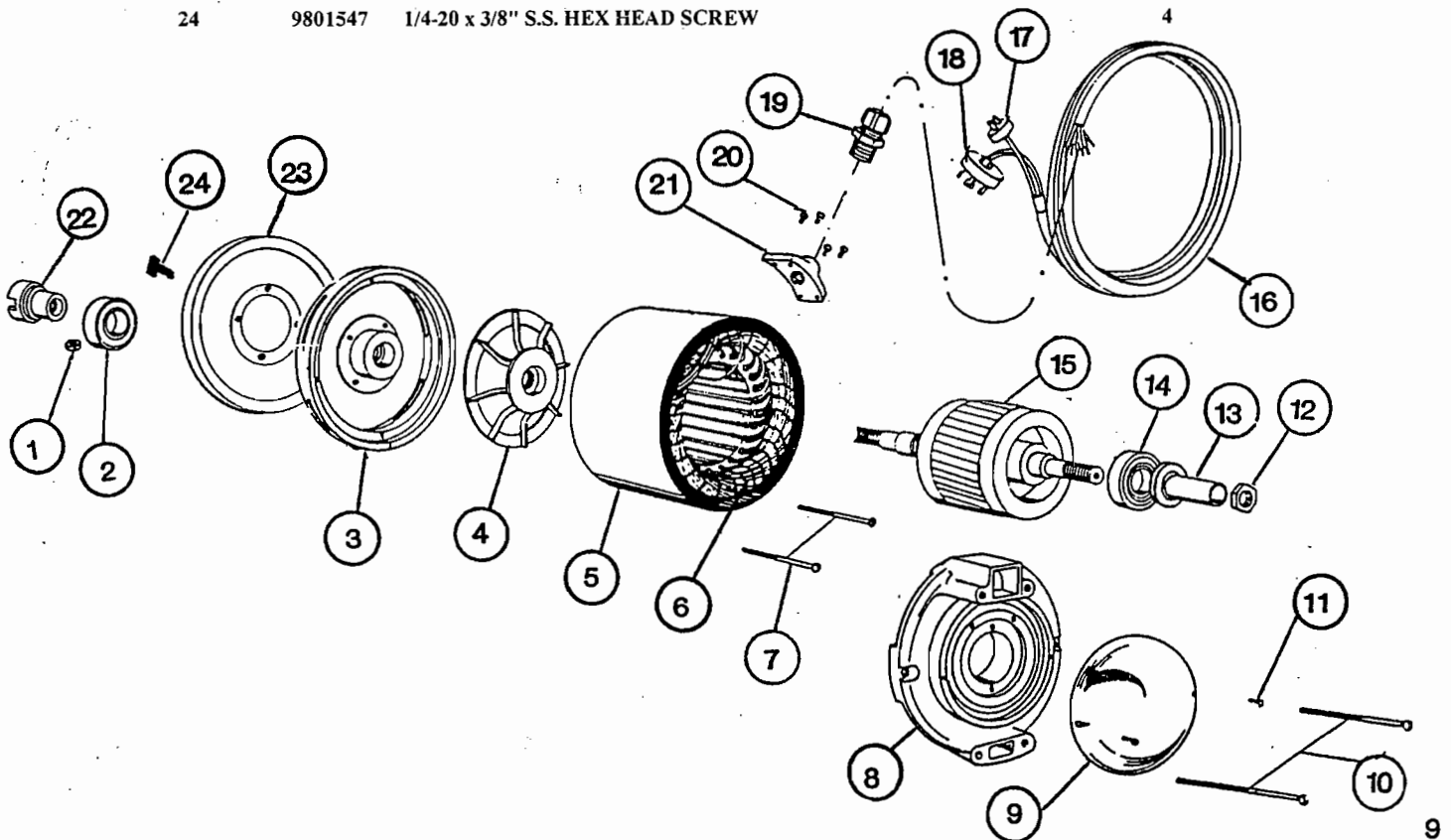
MARK "II" HOG BREASTBONE OPENER SAW GUARD & BLADE PART LIST

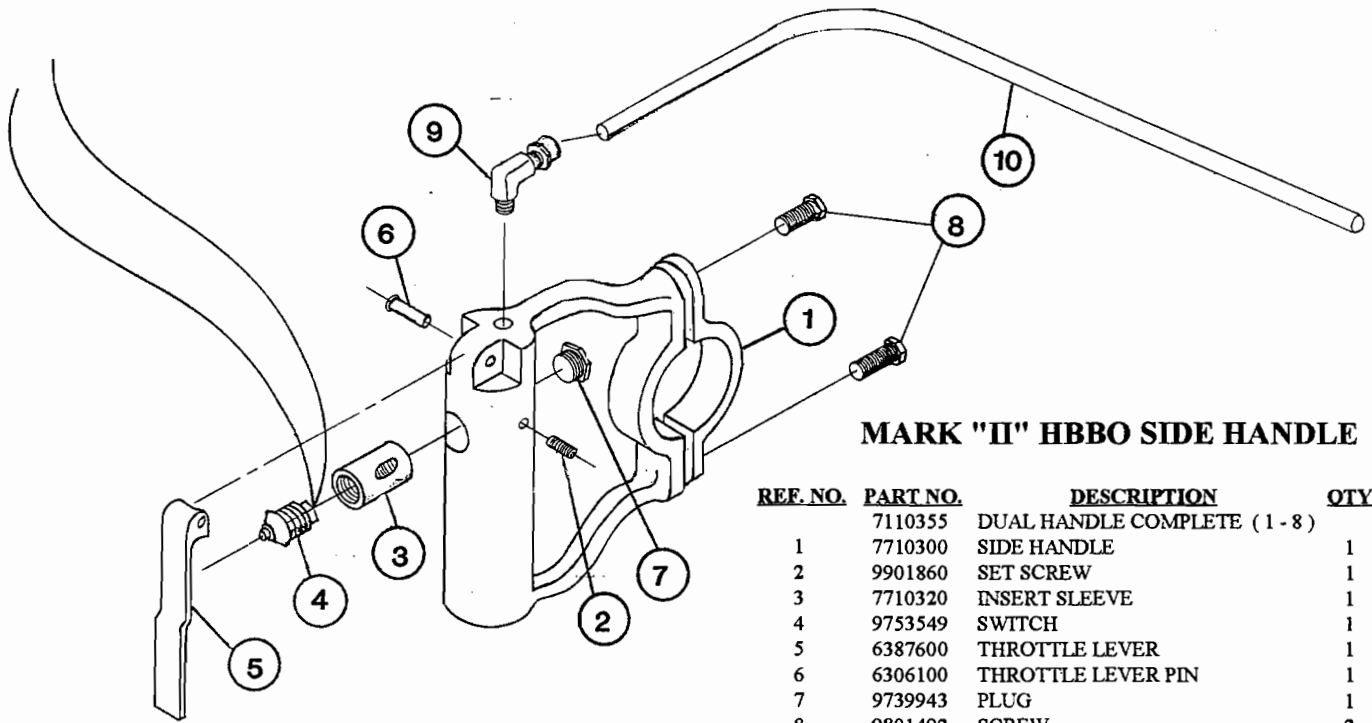
REF. NO.	PART NO.	DESCRIPTION	QTY.
1	8856500	8" SAW GUARD	1
2	8851000	GUARD GREASE SEAL	1
3	8857000	GUARD GASKET	1
4	8856693	PLUG	1
5	9800121	SHORT SCREW	1
	9800123	MEDIUM SCREW	1
	9800124	LONG SCREW	2
6	6104000	6 1/2" 142 TOOTH/8 POINT BLADE	1
	6104200	8" 176 TOOTH/8 POINT BLADE	1
	6104400	8" 100 TOOTH/5 POINT BLADE	1



MOTOR PART LISTING

REF. NO.	PART NO.	DESCRIPTION	QTY.
1	9901679	NUT	1
2	8817093	BEARING	1
3	8834000	FRONT HEAD	1
	8887800	FRONT HEAD - ENCLOSED (NOT SHOWN)	1
4	8833000	FAN	1
5	8877000	MOTOR CASE	1
6	88113xx	1 1/2 H.P. STATOR ONLY - SPECIFY VOLTAGE, PHASE & CYCLE	1
7	9800154	MOTOR BOLT - SHORT	2
8	8841260	REAR HEAD & COVER - 110 TO 550 VOLT	1
	8841360	REAR HEAD & COVER - 24 OR 42 VOLT	1
	8887960	REAR HEAD (ENCLOSED)	1
9	4525000	COVER	1
10	9800158	MOTOR BOLT - LONG	2
11	9800034	SCREWS	2
12	4509500	LOCK NUT	1
13	1007000	SPACER	1
14	1067093	BEARING	1
15	8835061	ROTOR & SHAFT	1
16	1132393	LINE WIRE - 18-6	
	1131493	LINE WIRE - 24 OR 42 VOLT	
	1117293	LINE WIRE - 24 OR 42 VOLT WITH CONTROL WIRE	
17	1107600	2 PRONG PLUG	1
18	1134193	110 VOLT 4 - PRONG PLUG (NOT SENT WITH TOOL)	1
	1105400	220 VOLT	1
	1105000	380/440 VOLT	1
	1134393	550 VOLT	1
19	1132393	STRAIN RELIEF - 18-6 WIRE	1
	1131293	STRAIN RELIEF - 24 OR 42 VOLT LINE WIRE	1
	1046200	STRAIN RELIEF - 24 OR 42 VOLT CONTROL WIRE	1
20	9802739	SCREWS	4
21	8803000	CORD CONNECTOR BASE - 110 TO 550 VOLTS	1
	8803024	CORD CONNECTOR BASE - 24 & 42 VOLT	1
22	8882000	FEMALE CLUTCH	1
23	8834100	SPLASH PLATE	1
24	9801547	1/4-20 x 3/8" S.S. HEX HEAD SCREW	4



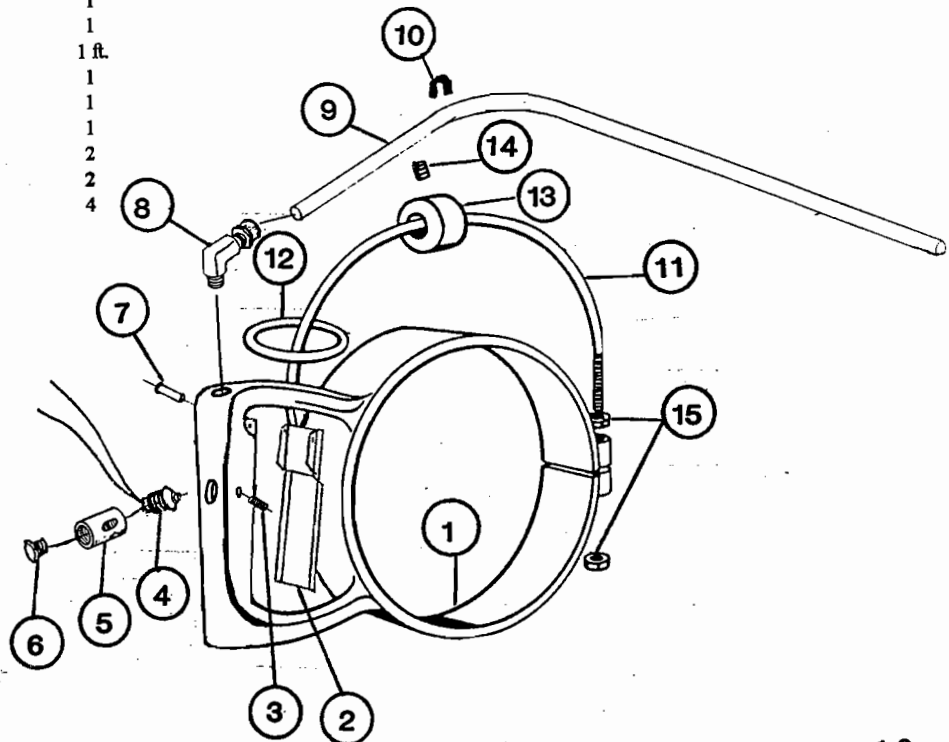


MARK "II" HBBO SIDE HANDLE

REF. NO.	PART NO.	DESCRIPTION	QTY.
	7110355	DUAL HANDLE COMPLETE (1-8)	
1	7710300	SIDE HANDLE	1
2	9901860	SET SCREW	1
3	7710320	INSERT SLEEVE	1
4	9753549	SWITCH	1
5	6387600	THROTTLE LEVER	1
6	6306100	THROTTLE LEVER PIN	1
7	9739943	PLUG	1
8	9801492	SCREW	2
9	6254093	MALE ELBOW	1
10	6523391	1/4" O.D. HOSE	3 ft.

RED STREAK SIDE HANDLE

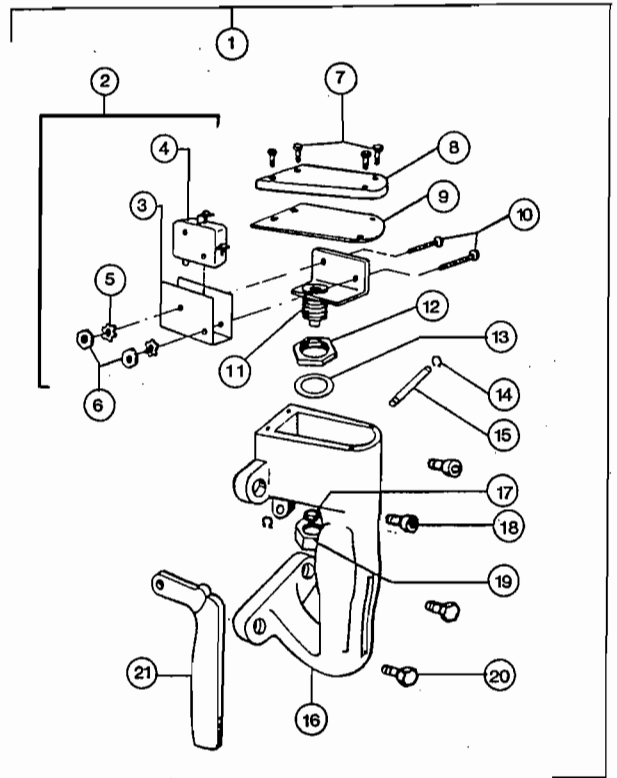
REF. NO.	PART NO.	DESCRIPTION	QTY.
	8807050	SIDE HANDLE COMPLETE	
1	8807000	SIDE HANDLE	1
2	6387600	LEVER	1
3	9801860	SET SCREW	1
4	9753549	SWITCH	1
5	7710320	INSERT SLEEVE	1
6	9739943	PLUG	1
7	6360100	LEVER PIN	1
8	6524093	MALE ELBOW	1
9	6523391	1/4" O.D. HOSE	1 ft.
10	6288025	WIRE CLIP	1
11	8808500	CURVED ROD	1
12	8808793	HANGER RING	1
13	8808800	COLLAR	2
14	9801880	SET SCREW	2
15	9801679	NUT	4



OPTIONAL REAR HANDLES

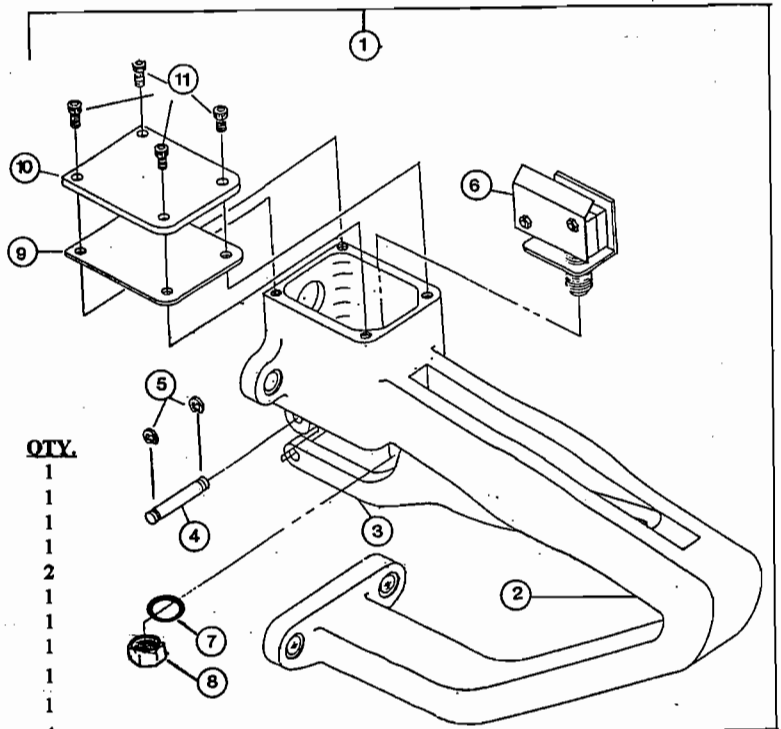
SERIES "D" REAR HANDLE

REF. NO.	PART NO.	DESCRIPTION	QTY.
1	6047059	REAR HANDLE COMPLETE	1
2	6047559	SWITCH ASSY. COMPLETE	1
3	6048600	SWITCH INSULATOR	1
4	6048500	SWITCH	1
5	9901951	LOCK WASHER	2
6	9901671	NUT	2
7	9900339	SCREW	4
8	6043000	HANDLE CAP	1
9	6043500	GASKET	1
10	9900037	SCREW	2
11	6047660	SWITCH BRACKET SUB ASSY.	1
12	6045100	SWITCH NUT	1
13	6046500	SWITCH GASKET	1
14	1208193	RETAINING CLIP	2
15	6044500	TRIGGER HINGE PIN	1
16	6047155	HANDLE & CAP ASSEMBLY	1
17	6046093	O" RING	1
18	9801298	SCREWS	2
19	6045500	SWITCH RETAINING NUT	1
20	9801410	SCREWS	2
21	6044000	TRIGGER	1
N/S	6524093	MALE ELBOW CONNECTOR (DUAL HANDLE ELECTRICAL CONNECTOR)	1

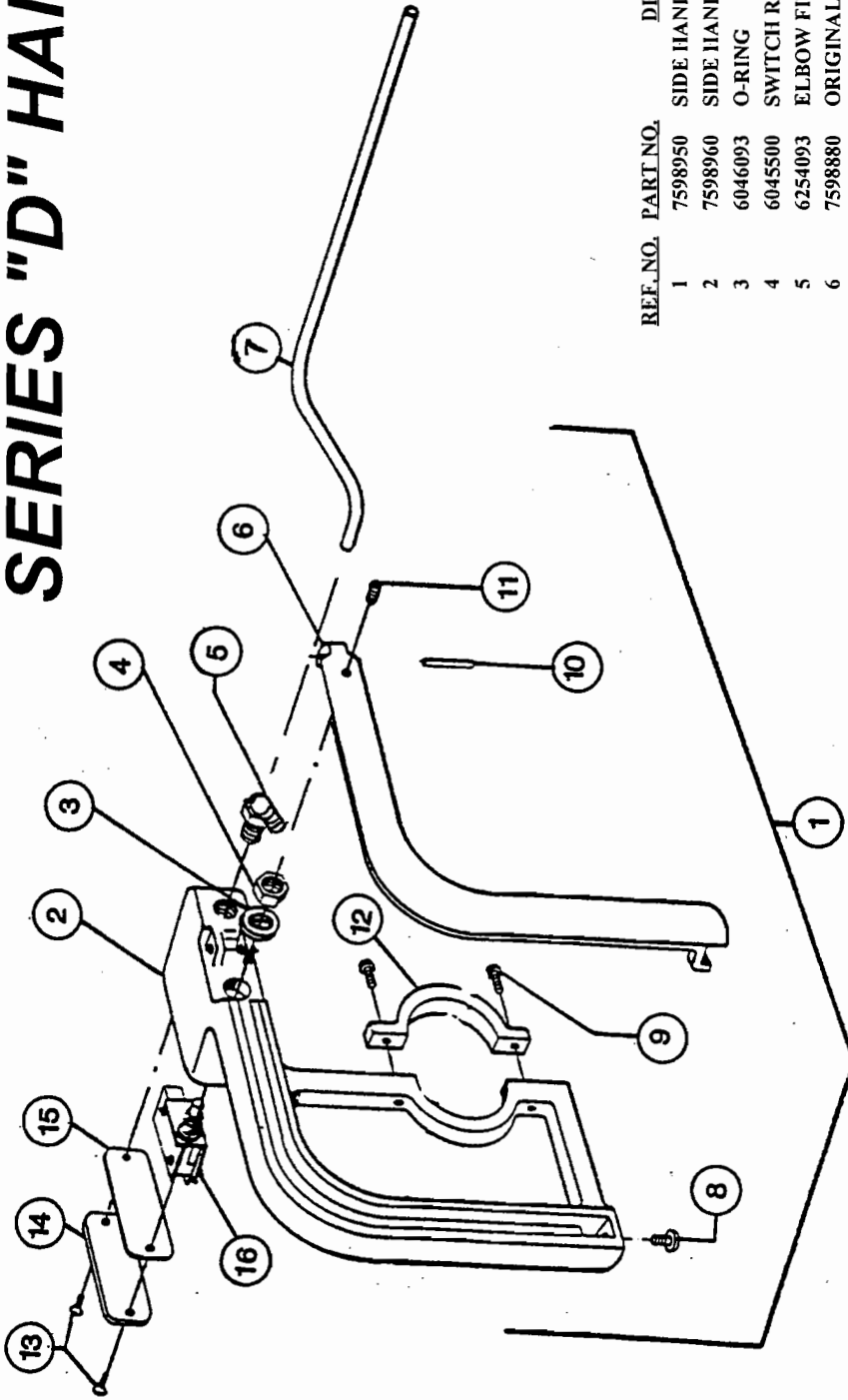


SERIES "H" REAR HANDLE

REF. NO.	PART NO.	DESCRIPTION	QTY.
1	7706659	REAR "H" HANDLE COMPLETE	1
2	7706600	REAR HANDLE & CAP	1
3	7706800	TRIGGER	1
4	6044500	TRIGGER HINGE PIN	1
5	1208193	RETAINING RINGS	2
6	6047559	SWITCH ASSY. COMPLETE	1
7	6046093	O" RING	1
8	6045500	SWITCH LOCK NUT	1
9	7706900	CAP GASKET	1
10	7706700	HANDLE CAP	1
11	9802668	CAP SCREWS	4
N/S	6524093	MALE ELBOW CONNECTOR (DUAL HANDLE ELECTRICAL CONNECTOR)	1



SERIES "D" HANDLE



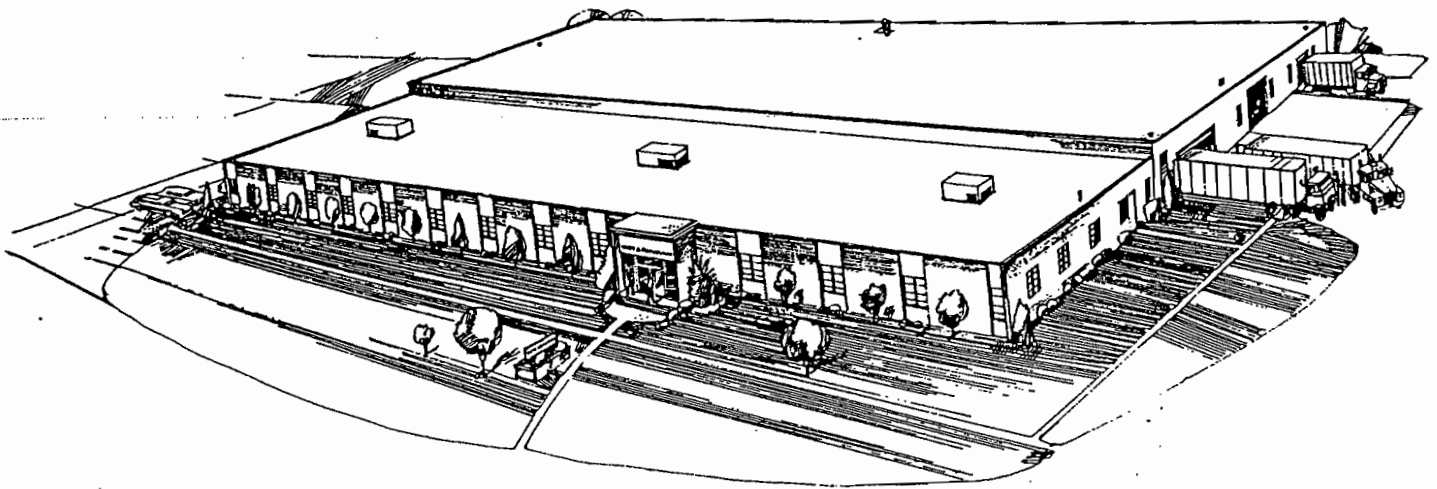
REF. NO.	PART NO.	DESCRIPTION	QTY.
1	7598950	SIDE HANDLE ASSY.	1
2	7598960	SIDE HANDLE & CAP ASSY.	1
3	6046093	O-RING	1
4	6045500	SWITCH RETAINER NUT	1
5	6254093	ELBOW FITTING	1
6	7598880	ORIGINAL STYLE TRIGGER	1
N/S	7598971	NEW STYLE TRIGGER - THIN	1
7	6523391	1/4" O.D. HOSE	1
8	9901438	SCREW	1
9	9901492	SCREWS	2
10	9902050	ROLL PIN	1
11	9901922	SET SCREW	1
12	7598991	CLAMP FOR SIDE HANDLE	1
13	9902667	SCREWS	2
14	7598972	SIDE HANDLE CAP	1
15	7598973	SIDE HANDLE GASKET	1
16	6047559	SWITCH ASSY. COMPLETE	1

BEST & DONOVAN

5570 CREEK DOAD

CINCINNATI, OHIO 45242, USA.

TOLL FREE :1-800-553-2378 TEL.: 1-513-791-9180 FAX 1-513-791-0925



SHOWN ABOVE IS BEST & DONOVAN'S MAIN FACTORY AT 5570 CREEK ROAD CINCINNATI, OHIO, U.S.A. B&D HAS A SECOND MANUFACTURING PLANT IN OAK RIDGE, TENNESSEE.

B&D IS THE WORLD'S LARGEST, OLDEST AND MOST EXPERIENCED MANUFACTURER OF AIR, HYDRAULIC AND ELECTRICALLY OPERATED PORTABLE POWER MEAT TOOLS AND HAND-HELD SKINNERS.

BEST & DONOVAN

5570 CREEK RD., CINCINNATI, OH 45242, USA

TOLL FREE: 1-800-553-2378
TELEPHONE: (513) 791-9180
WEBSITE: www.bestanddonovan.com
FAX: 513-791-0925
E-MAIL: info@bestanddonovan.com