



### Requirements and Solutions

The machines of the Innosept Asbofill ESL (Extended Shelf Life) machine program are designed for the hygienic filling of liquid, non-carbonated, microbiologically sensitive high- and low acid cold chain distributed beverages and dairy products.

The nominal capacity of the machine program is approximately 12,000 bottles per hour.

The machines of Innosept Asbofill ESL series meet the requirement for processing different filling volumes and are available for various types of bottle necks:

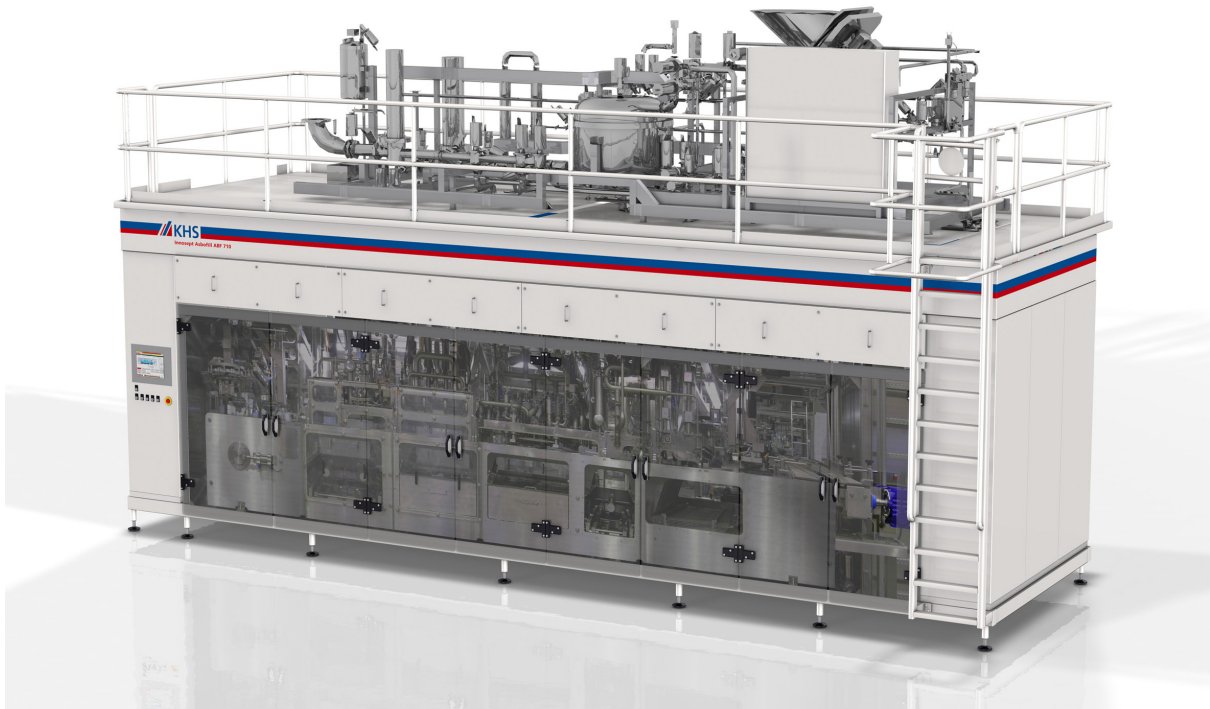
- Innosept Asbofill ESL 611 for 100 - 750 ml filling volume range
- Innosept Asbofill ESL 711 for 250 - 2,000 ml filling volume range

### Key Features

- Completely enclosed, linear machine platform - developed especially for hygienic filling of cold chain products
- Modular machine concept with an extremely small hygienic zone
- Machine design, process and control technology according to VDMA class IV
- H2O2 bottle and cap disinfection
- Non-contact filling system
- Positive-displacement flow for maintaining the hygienic zone

### Standard Equipment

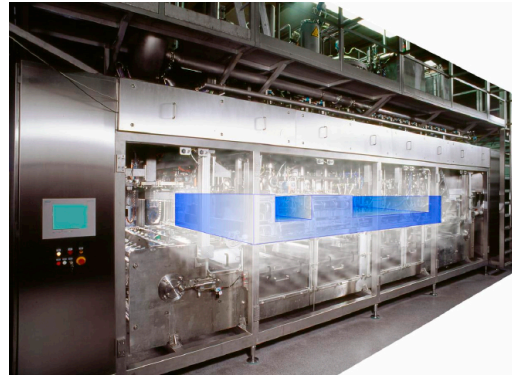
- Fully automatic filling process
- Complete, integrated valve manifold module including sterile air preparation
- All internal machine processes integrated into the filler unit
- Foam cleaning station for automatic machine sanitizing
- Low-pressure compressor for purging with sterile air
- Easy touch-screen operation





**Benefits**

- Bottles and closures reliably disinfected with peroxide condensation
- Alternate processing of PET and HDPE bottles possible
- Resource-conserving and environmentally friendly
- Low operating costs
- Fast product changing and short changeover
- small, flexible filling batches
- High system availability - no intermediate disinfection during production cycle
- High operator acceptance due to intuitive operator prompting
- Dry hygienic zone for microbiological safety
- Non-contact, free-flow filling
- No rotating parts in the filling area
- Small footprint
- Reasonable priced machine maintenance



**Service**

- Standardized maintenance system
- Worldwide service
- Immediate assistance via ReDiS remote diagnostic system possible
- Complete systems for beverage and dairy product industry

**Options**

- Lane coding system
- H2O2 handling module
- Filling valves for pulpy products with fiber lengths up to 15 mm
- Production data acquisition

**Technical Specifications**

**Machine capacities**

- ESL 611: 12,000 bph for 500 ml; 9,000 bph for 750 ml; 6,000 bph for 1,000 ml
- ESL 711: 12,000 bph for 1,000 ml; 9,000 bph for 1,500 ml; 6,000 bph for 2,000 ml

**Machine dimensions (mm)**

- ESL 611: 5,800 x 1,700 x 4,000 (LxWxH); Footprint: ~ 10 m<sup>2</sup>
- ESL 711: 7,400 x 2,400 x 6,000 (LxWxH); Footprint: ~ 17.8 m<sup>2</sup>

**Bottle dimensions**

- ESL 611: Max. bottle diameter: 85 mm, max. height: 240 mm
- ESL 711: Max. bottle diameter: 120 mm, max. height: 350 mm
- Standard neck diameter: 28 mm, 38 mm or 43 mm conveyed by neck ring (different neck sizes optional available)

**Closures**

- Plastic Screw Caps or Aluminum Foil Seal

**Products for the cold chain (depending on the type of machine)**

- Milk, yogurt drinks, mixed milk drinks, mixed coffee drinks, fruit and vegetable juices

For further information please ask for the technical machine description of "Linear hygienic bottle filling system KHS Innosept Asbofill ESL"

KHS GmbH

Planiger Straße 139 - 147  
 55543 Bad Kreuznach  
 Germany  
 Phone: +49 (0) 671 / 852-0  
 Fax: +49 (0) 671 / 852-2904  
 E-mail: innosept.asbofill@khs.com  
 www.khs.com

