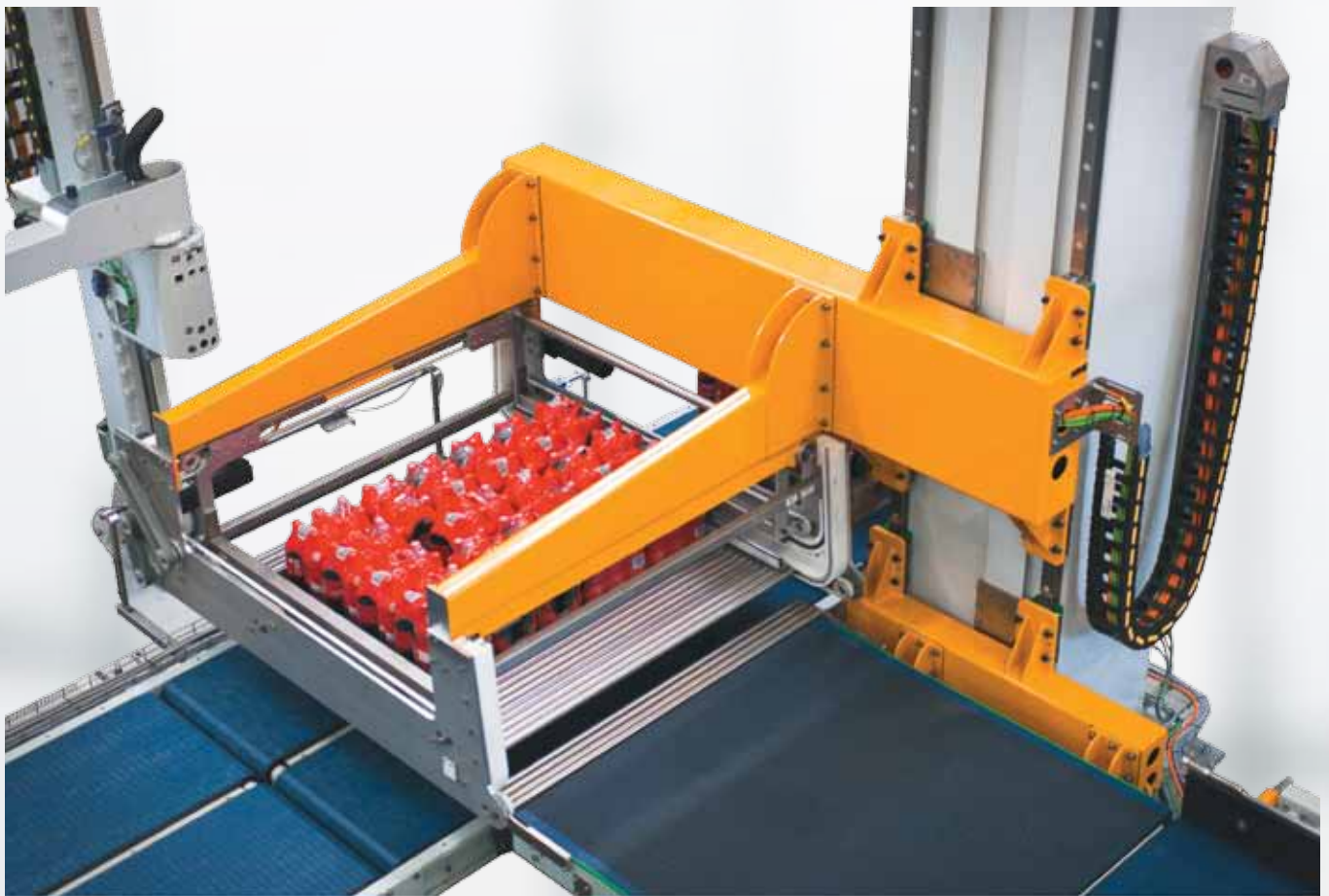


EvoFlex® Range

Universal and flexible de/palletizing solutions



- Clean single-column technology
- Universal, flexible and evolutive architecture
- Sturdy design with advanced ergonomics and accessibility
- Low Total Cost of Ownership

EvoFlex®

The perfect balance of flexibility and performance

Markets

Beverage



Food



Dairy Products



Personal care



Home care



Pharmaceutical



Applications



American cases (RSC)



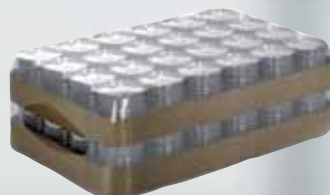
Wrap around blanks and lidded trays



Trays



Shrink-wrapped packs



Shrink-wrapped trays



Pallets with packs



Pallets with cases



Pallets with interlayer pad



Half/quarter of pallets



Pallets with plastic crates

The end-of-line packaging market is complex, and becoming more so by the day. Consumer good manufacturers often need to package a wide range of products with a maximum of reliability and a minimum of operational costs. EvoFlex® is a comprehensive range of de/palletizers and de/craters offering unparalleled flexibility, modularity and all-round performance.

EvoFlex® systems can handle any and all types of products and secondary packaging. Their clean and sturdy single-column design with double or single lifting unit, enabling floor or high level infeed, sets it apart from alternatives with the best Total Cost of Ownership of the market. The simplicity of the system enables automatic changeovers in under a minute with no manual adjustment. What's more, for high speed applications, EvoFlex® is the fastest palletizing system of its category, capable of processing up to twelve layers per minute.

And of course the quality and integrity of the packaging remain impeccable, even for the very lightest containers.

A full range of applications (standard solutions)

		Packs, Cases			Crates	
Infeed level		High	Low		Low	
Speed		High	Medium	High	Medium	High
Pallet	Size	1,050x1,250	1,050x1,250	1,050x1,250	1,050x1,250	1,050x1,250
	Height	2,200 mm	2,200 mm	2,200 mm	2,200 mm	2,200 mm
	Weight	2,000 kg	2,000 kg	2,000kg	2,000 kg	2,000 kg
Layer	Size	1200x1200 mm	1200x1200 mm	1200x1200 mm	1200x1200 mm	1200x1200 mm
	Weight	Up to 300 kg	Up to 300kg	Up to 300 kg	Up to 300 kg	Up to 300 kg
Max. speed (layer/minute)		8	7	12	7	9

Main functions

Smooth packaging handling and reliable layer preparation



- Layer preparation with belt conveyor for accurate handling of unstable packaging
- No pusher: layer transfer simply based on inertia
- High-friction belt to allow smooth layer transfers, suitable for any type of product surfaces
- Additional layer accumulating table for high-speed applications
- Vertical moving belt conveyor taking the already formed layer and transferring it to the roller head

Layer handling by central column concept with lifting unit



CENTRAL COLUMN

- Single or double lifting unit on a single column
- Servo-driven self-braking motors equipped with an encoder for the vertical movement
- Simple motion technology

ROLLER HEAD

- Composed with motorized roller table and 4 servo-driven lateral compacting guides
- Transfer into roller head based on layer inertia (no additional motorization and pusher needed)
- Head opening in 2 halves to release the layer onto the pallet/previous layer



GRIPPING HEAD

- Gripping of the case layer on all sides for product pick-up and movement
- Pick-up by pushers fitted with horizontal tubes driven by a pneumatic system
- Guide position maintained by a mechanical effects (knee position)
- Contact with cases ensured by independent plastic pads adjustable to the actual layer size



CENTRAL PALLET CONVEYOR

- Empty pallet stopped by pneumatically-driven mechanical retainer
- Presence and correct positioning of the pallet controlled by 2 sensors

Main transversal features

Flexibility/Versatility



- Suitable for applications at all speeds
- All product and pallet types without manual adjustments
- Fast changeovers
 - Automatic changeovers without manual intervention
 - Changeovers in less than 1 minute

Low Total Cost of Ownership (TCO)



- Only one operator for the whole end-of-line
- Optimized consumptions
 - High efficiency drives, based on brushless technology
 - Low air consumption, only 2 cylinders
- Very low maintenance
 - Sturdy and reliable single column technology
 - Reinforced driving belts, no chains
 - Reduced component groups
- Low level infeed configuration (high speed): no pack or case elevator, no platforms

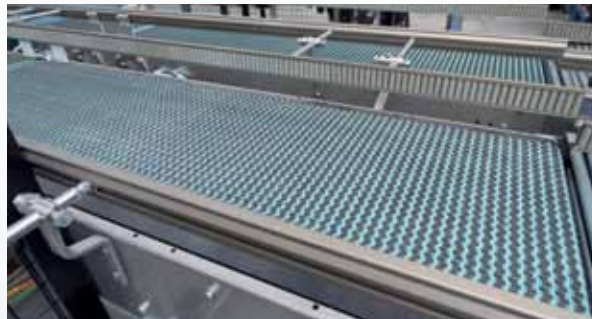
Easy operation / Accessibility



- Compact and reduced layout
- Adaptability to site constraints
- Improved ergonomics and safety
 - Simple supervision operations
 - All operations and mains parts accessible at floor level
- Intuitive and user-friendly operator interface

Infeed systems

General infeed features



- Possibility of single or dual lane infeed according to speed
- Low level (800/1,100mm) or high level (2,870mm) infeed
- Positive pack handling solutions for layer preparation:
 - Robosmart
 - Axosmart



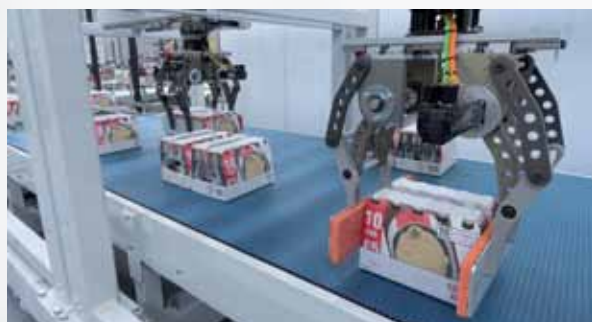
- In-line infeed with divider
 - Shifting packaging to right or left side according to pallet pattern
 - Inverter control speed adjustment for different formats
 - Dividing solution for up to 10 lanes
 - Rotating devices according to pack stability and dimensions

Robo-smart modular layer forming system



- High repeatability and precise movements
- High flexibility with possibility to handle more packaging at the same time
- Automatic changeovers
- Full access and easy maintenance operations
- Aluminum gripping heads
- 6-axis anthropomorphic robot with payload of 50 to 70 kg at wrist

Axo-smart modular layer forming system



- Packaging moved and turned by 1 to 3 handling units
- Servo-driven gripping head, moving along 2 Cartesian axes
- High-speed solution
- High repeatability and precise movements
- Full access and easy maintenance operations
- Option: automatic changeovers

Additional functions

HMI and Place software



- Various control system platforms available
- Full and easy access/control of all machine parameters
- Place programming and pallet pattern management software, giving full autonomy to the user
- Possibility to integrate EIT™ (Efficiency Improvement Tool) for machine and line supervision
- 10" touchscreen main control panel and additional 6" mobile touchscreen

Pad dispenser



- Capability to handle various pad materials, dimensions and thicknesses
- Rotating arm equipped with suction cups
- Precise positioning of the pad onto the pallet/previous layer
- Servo-motorization for high-speed version
- Manual or automatic pad magazine loading

Pallet handling



- Customized configurations designed to comply with production flow and factory layout constraints
- Various conveying modules available: roller, chain and belt conveyors, rotating and 90° tables, elevators
- Comprehensive range of pallet handling devices: pallet magazine, pallet inspection system

Integration for logistic solutions



- Stretch-wrapper,
- Pallet labeller,
- Automatic or laser guided vehicles (AGV/LGV)
- Automated warehouse systems
- EIT Plas software for supply chain management

Crate layer Outfeed table



- Positioning of the layer on the table fixed to the ground
- Alternative transfer by a pusher on two roller conveyor positioned aside to the table
- Conveying of the layer as unique block
- Separation of the layer in rows of crates
- Single-lane conveying of the crates

Item	Specifications
Controlled axis	From 8 to 22
Working space	Packs infeed height 800/1,100 mm - pallet conveyors height 550 mm
Weight	5,000 kg (machine column and head only)
Drive technology	Servo-motors
Electrical data	380-480 V, 3-phase, 48-62 Hz
Energy consumption	available on request due to configuration and layout variations
Air pressure	6 bars
Motor and electric protection	IP 54

First in line

In a complex industry where know-how is everything, Gebo Cermex is formed from the union of two strong brands: Gebo & Cermex, gathering packaging line engineering experience across a range of market segments from beverages and food to pharmaceuticals, via home and personal care.

For over half a century, our experts have improved the performance of production and packaging lines in some of the most demanding industries.

Today **more than 37,000 equipment & systems installations bear our signature**. We add value to our customers' business in four dimensions, from equipment design and manufacturing to line engineering, services and asset performance.

Gebo Cermex, headquartered in Strasbourg, France is a people-centric organization with **1800 employees and over 20 commercial & manufacturing sites** in all major regions around the world.

No-one knows packaging lines like we do. We are first in line.

Gebo Packaging Solutions Italy
Via La Spezia, 241/A • 43126 Parma - Italy
Tel: +39 0521 9991

Gebo Cermex Headquarters
Rue du Commerce, CS 73455 Reichstett
67455 Mundolsheim Cedex - France
Tel.: +33 (0)3 88 18 38 50

■ contact.us@gebocermex.com ■ www.gebocermex.com

