

Cleaning systems for the engineering and automotive industry

Continuous cleaning systems **PROGRESS**

Cleaning and degreasing of parts
with the spraying technology



PROGRESS 901



NERKON

Economical washing and degreasing of parts for the engineering and automotive industry

Continuous cleaning systems PROGRESS were specifically developed for economical washing and degreasing for the engineering and automotive industry. The machine equipment corresponds to the changing demands in these dynamically growing industries. Thanks to the module construction of the machine, it is possible to find an individual solution fitted for each customer with the option of later adjustment.



PROGRESS 401



PROGRESS 901

PROGRESS 901-1200

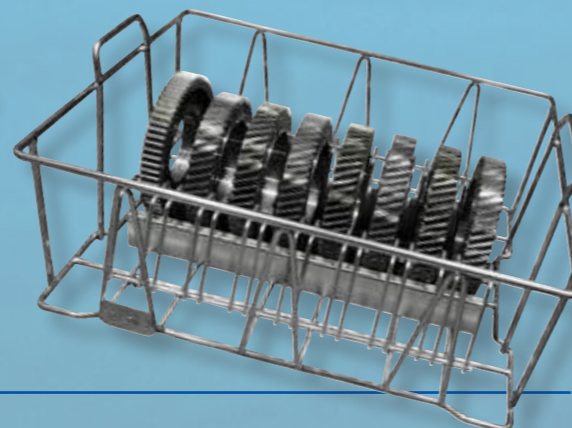
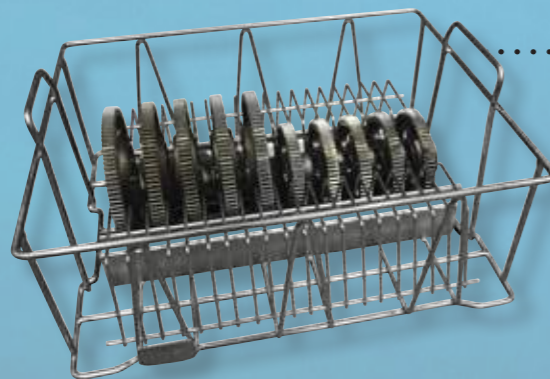


PROGRESS 901-2000

Your advantages:

- Cleaning of loosely laid parts on the conveyour belt, in a basket or a carrier;
- Convoyer width between 15 and 2000 mm;
- The module construction of the machine makes it possible to find an individual solution with the option of later adjustment;
- Single-lane, two-lane or multi-lane machine;
- Construction, cladding and used units are all in stainless steel DIN 1.4301;
- Operation of the machine in accordance with the increasing demands for environmental protection;
- Automatic regeneration of cleaning solutions incl. two-stage filtration;
- Easy access to the machine thanks to spacious doors;
- Wide range of additional equipment according to specific requirements.

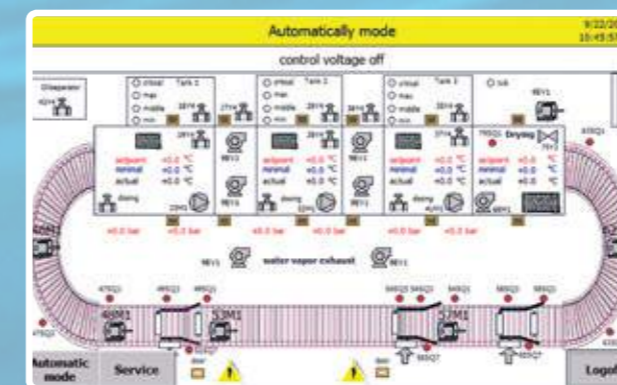
Example of the positioning of the parts in a carrier



Design and configuration of the washing system according to the specific requirements:

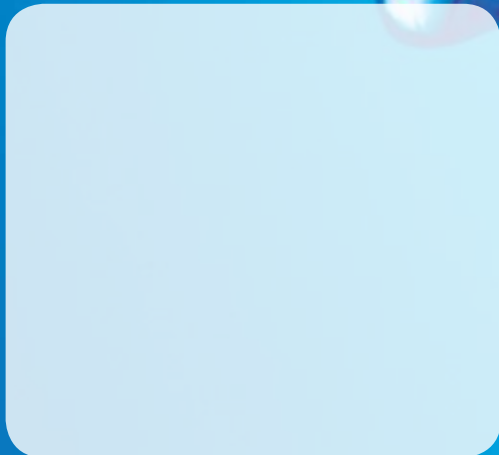
- Individual pass dimension with the possibility of multi-lane design;
- Extended infeed or outfeed table according to the individual logistic needs. Optimization of the service of the machine by additional conveyor belts;
- Automatical time and propotion doser of the washing agent;
- Sedimentation tank for the continuous separation of oil and mechanical contamination;
- Single or double mechanical filtration including bypass;
- Thermal isolation of the tanks and modules for higher effectivity;
- Water vapour suction or vapour condenser;
- Heat recovery out of the vapour suction;
- Powerful PLC control system incl. different cleaning programs, depending on the cleaned items;
- Automatical height adjustment of the washing and drying glands to the optimum distance of the objects to be cleaned, without stopping or opening the machine.

An example for a switchboard with touchscreen



Machines suitable for combined washing of: Intermediate washing or final washing and degreasing of cast parts, pressed parts, grinded parts and other parts.

Contact:



NERKON s.r.o. • Pompova 602/4, 617 00 Brno • Czech Republic
Mob.: +420 602 729 412 • +420 724 970 668 • E-mail: info@nerkon.cz
Web: www.nerkon.cz

We control the power of water.