

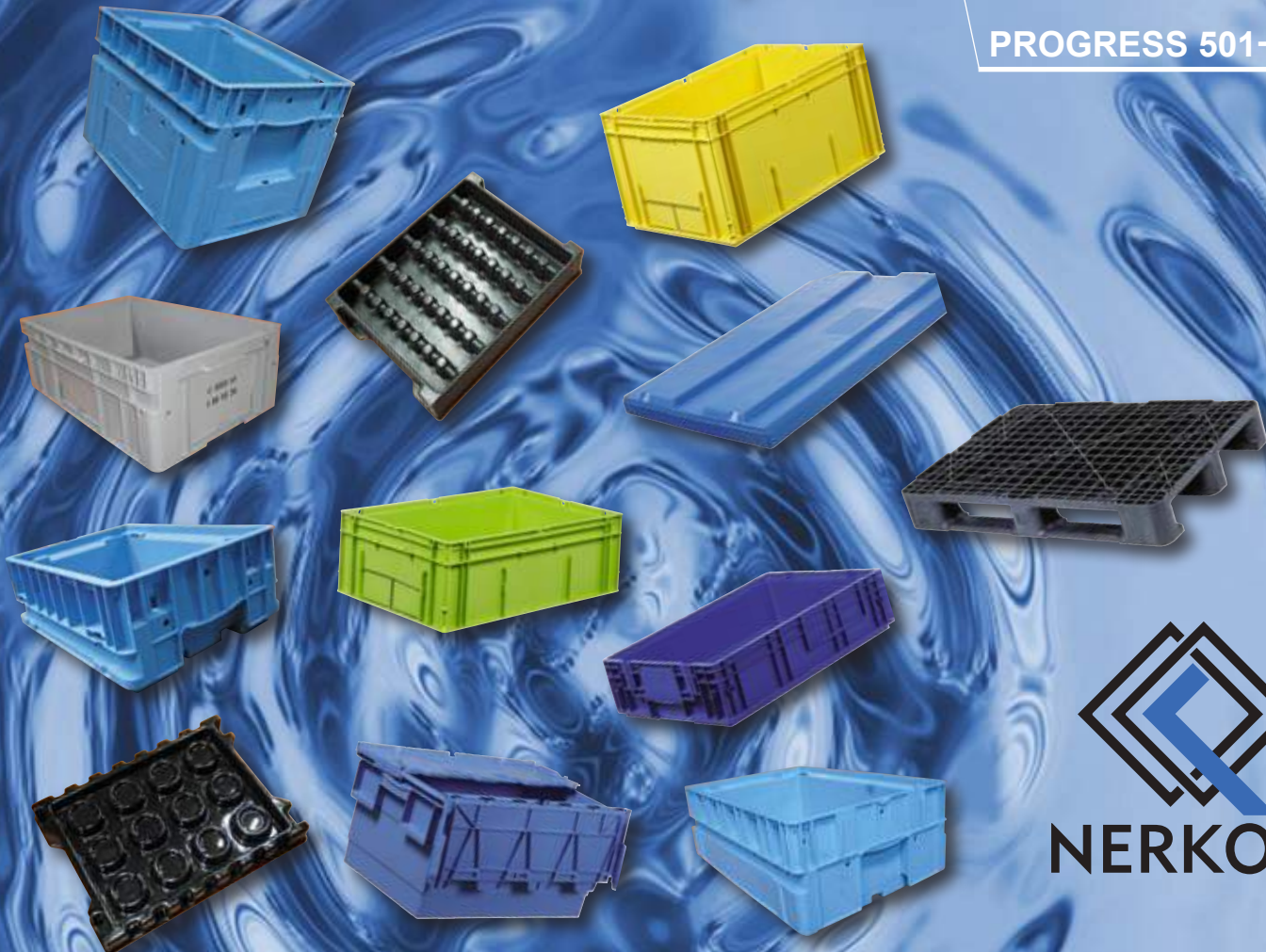
Special cleaning systems for the engineering  
and automotive industry

## Continuous cleaning systems **PROGRESS**

Combined cleaning of KLT boxes, cover plates,  
blisters and pallets in one single machine



PROGRESS 501-400



  
**NERKON**

# Economical washing of boxes for the engineering and automotive industry

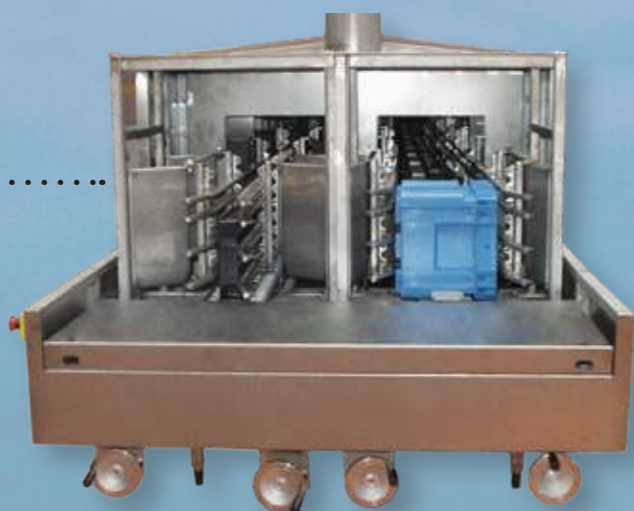
Continuous cleaning systems PROGRESS were specifically developed for economical washing of KLT boxes, cover plates, blisters and pallets for the engineering and automotive industry. The machine equipment corresponds to the changing demands in this dynamically growing industries. Thanks to the module construction of the machine, it is possible to find an individual solution fitted for each customer with the option of later adjustment.



## Your advantages:

- Variable continuous cleaning systems with spraying technology, adjustable guide and adjustable glands;
- Automatic height adjustment of the washing and drying glands to the optimum distance of the objects to be cleaned, without stopping or opening the machine;
- Quick and easy adjustment of the machine to the washing objects;
- The module construction of the machine makes it possible to find an individual solution with the option of later adjustment;
- Single-lane, two-lane or multi-lane machine;
- Construction, cladding and used units are all in stainless steel DIN 1.4301;
- Operation of the machine in accordance with the increasing demands for environmental protection;
- Automatic regeneration of cleaning solutions incl. two-stage filtration;
- Easy access to the machine thanks to spacious doors;
- Wide range of additional equipment according to specific requirements.

An example for a two-lane machine



# System of regeneration of the rinsing water

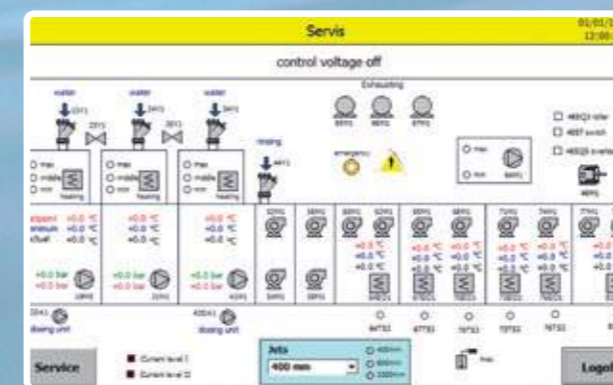
Thanks to the new system of regeneration of the rinsing water the last rinse tank of the machine PROGRESS remains the whole time perfectly clean. When using decalcified or demineralized water the appearance of spots on the washed items is minimized.



## Design and configuration of the washing system according to the specific requirements:

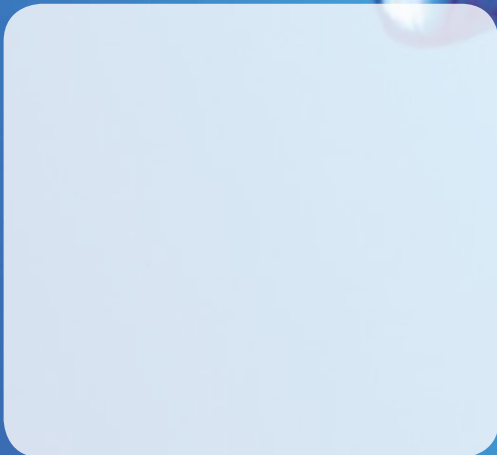
- Automatic adjustment of the water pressure and the drying, depending on the size of the objects to be washed;
- Automatic height adjustment of the washing and drying glands to the optimum distance of the objects to be cleaned, without stopping or opening the machine. Extended infeed or outfeed table according to the individual logistic needs;
- Optimization of the service of the machine by additional conveyor belts;
- Automatic time and proportion doser of the washing agent;
- Sedimentation tank for the continuous separation of oil and mechanical contamination;
- Single or double mechanical filtration including bypass;
- Thermal isolation of the tanks and modules for higher effectivity;
- Water vapour suction or vapour condenser;
- Heat recovery out of the vapour suction;
- High-capacity microprocessed operation system with possibility of choosing process parameters;
- Automatic and effective removal of labels;

## An example for a switchboard with touchscreen



Machines suitable for combined washing of: KLT boxes, cover plates, blisters and pallets.

Contact:



**NERKON s.r.o.** • Pompova 602/4, 617 00 Brno • Czech Republic  
Mob.: +420 602 729 412 • +420 724 970 668 • E-mail: [info@nerkon.cz](mailto:info@nerkon.cz)  
Web: [www.nerkon.cz](http://www.nerkon.cz)

*We control the power of water.*